

GARLAND FIVE DEPARTURE

SC-2, 11 JUL 2024 to 08 AUG 2024

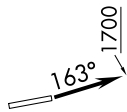
REGIONAL DEP CON
118.1 306.95
CTAF
122.8

**TOP ALTITUDE:
ASSIGNED BY ATC**

RADAR and DME required.

TAKEOFF MINIMUMS

Rwy 17: Standard.
Rwy 35: Standard with minimum climb of 320'/NM to 3500.



TEXARKANA
116.3 TKX
Chan 110

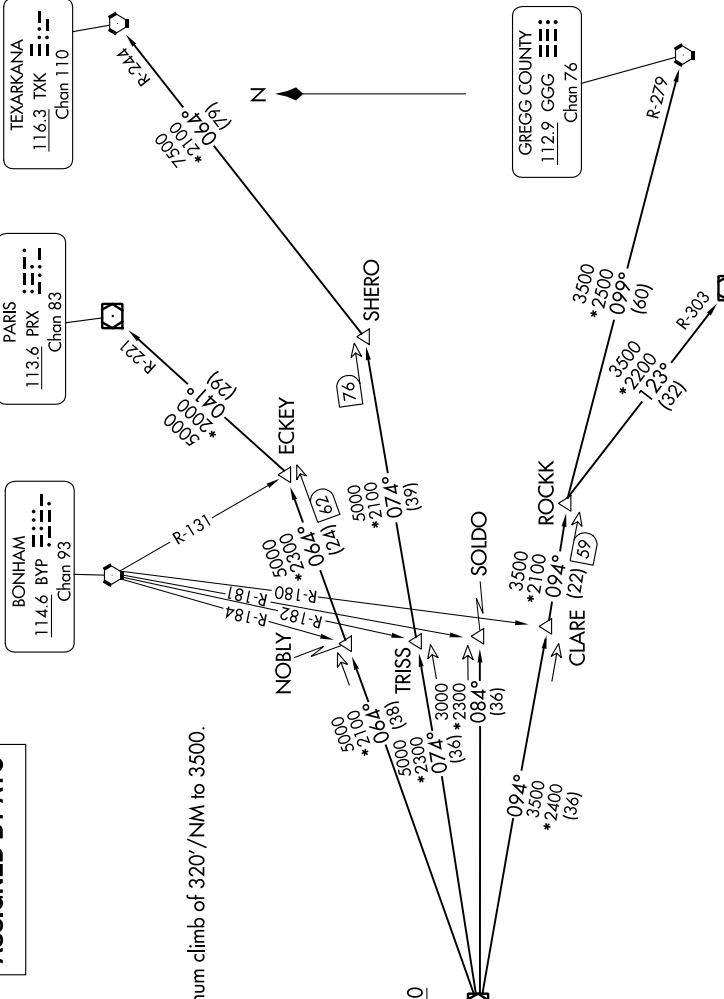
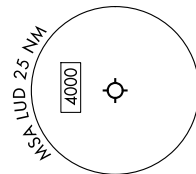
PARIS
113.6 PRX
Chan 83

BONHAM
114.6 BYP
Chan 93

MAVERICK
113.1 TTT
Chan 78

GREGG COUNTY
112.9 GGG
Chan 76

TYLER
114.2 TYR
Chan 89



NOTE: SOLDO Transition: ATC assigned.

NOTE: Chart not to scale.

(CONTINUED ON FOLLOWING PAGE)

SC-2, 11 JUL 2024 to 08 AUG 2024