

# KUSSO ONE DEPARTURE (RNAV)

SC-2, 11 JUL 2024 to 08 AUG 2024

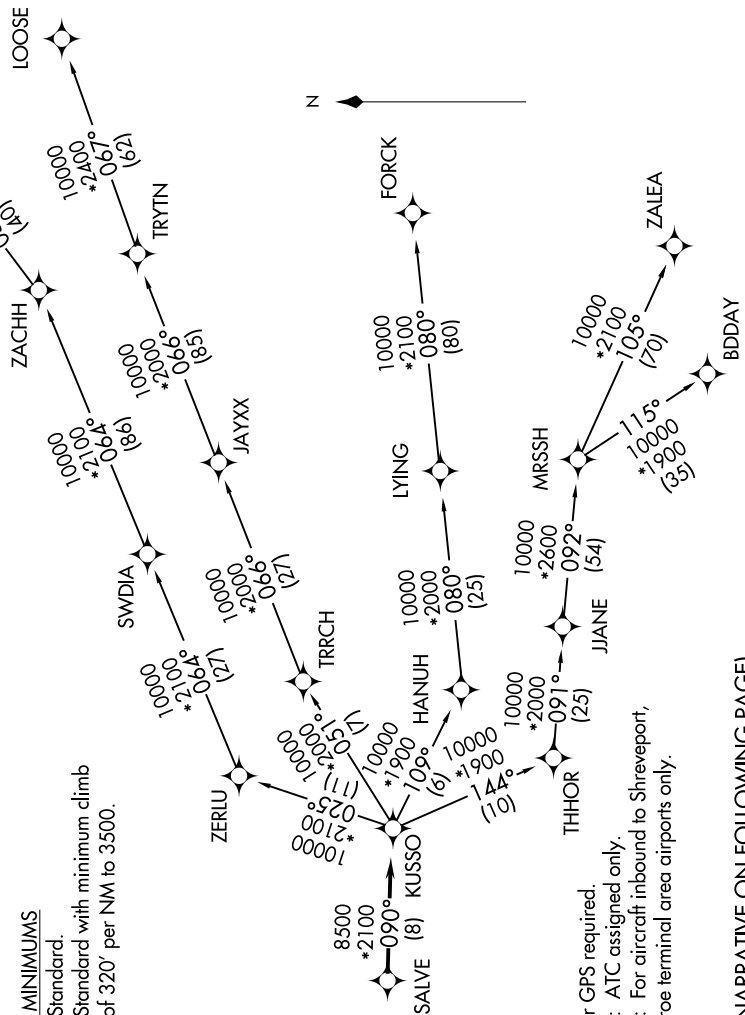
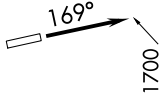
CTAF  
122.8  
REGIONAL DEP CON  
118.1 306.95

**TOP ALTITUDE:  
ASSIGNED BY ATC**

### TAKEOFF MINIMUMS

Rwy 17: Standard.

Rwy 35: Standard with minimum climb of 320' per NM to 3500.



- NOTE: RADAR required.
- NOTE: RNAV 1.
- NOTE: DME/DME/IRU or GPS required.
- NOTE: BDDAY Transition: ATC assigned only.
- NOTE: MRSSH Transition: For aircraft inbound to Shreveport, Jackson and Monroe terminal area airports only.

(NARRATIVE ON FOLLOWING PAGE)

NOTE: Chart not to scale.

SC-2, 11 JUL 2024 to 08 AUG 2024

# KUSSO ONE DEPARTURE (RNAV)