

| | | |
|-------------|----------|-------------|
| APP CRS | Rwy Idg | 4000 |
| 354° | TDZE | 248 |
| | Apt Elev | 248 |

RNAV (GPS) RWY 35

PANOLA COUNTY-SHARPE FLD (4F2)

RNP APCH-GPS.

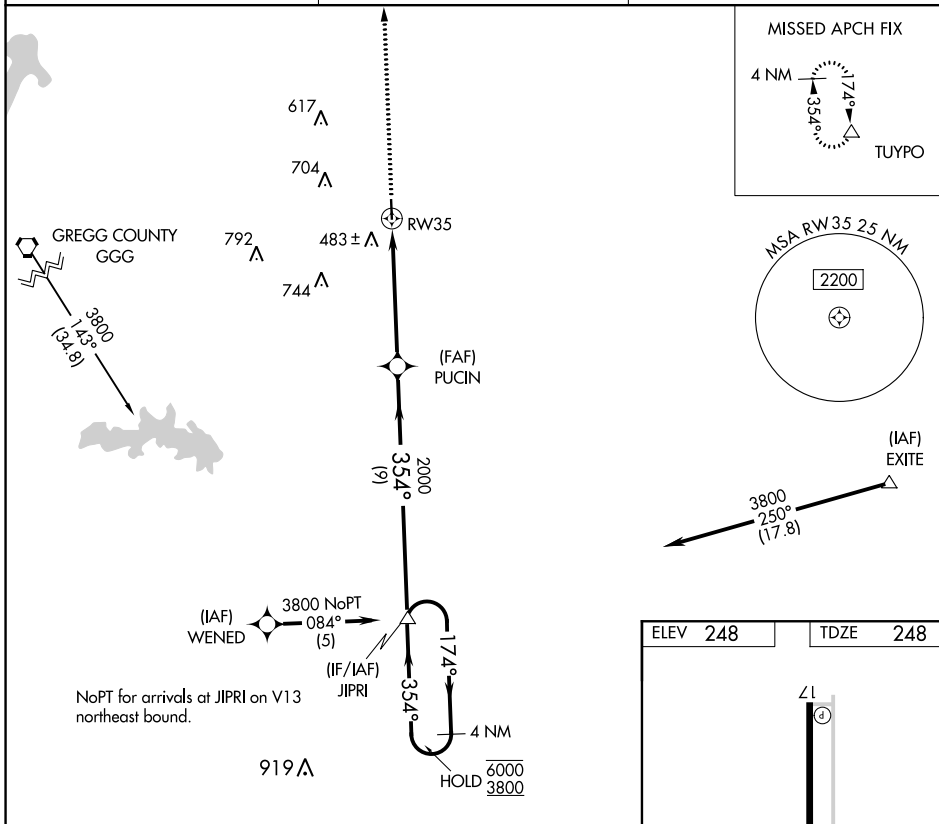
⚠ Rwy 35 helicopter visibility reduction below 3/4 SM NA.
When local altimeter setting not received, use Longview altimeter setting.

MISSED APPROACH: Climb to 2000 direct TUYPO and hold.

AWOS-3PT
121.125

SHREVEPORT APP CON *
119.9 335.55

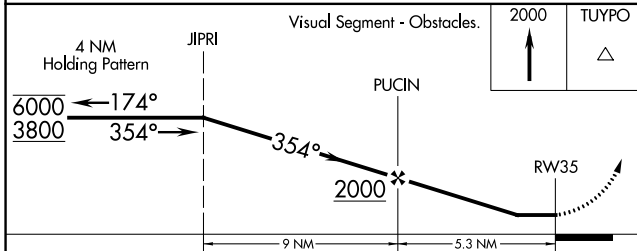
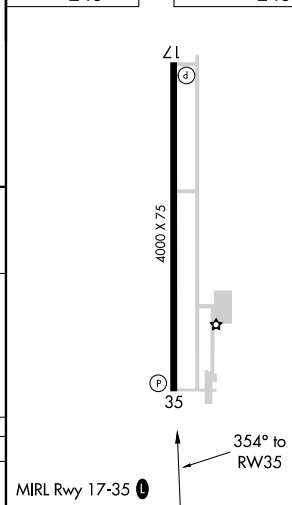
UNICOM
122.8 (CTAF) 0



SC-2, 11 JUL 2024 to 08 AUG 2024

SC-2, 11 JUL 2024 to 08 AUG 2024

| | |
|----------|----------|
| ELEV 248 | TDZE 248 |
|----------|----------|



| CATEGORY | A | B | C | D |
|----------|-------|-------------|------------------------|----|
| LNAV MDA | 840-1 | 592 (600-1) | 840-1½ 592 (600-1½) | NA |