

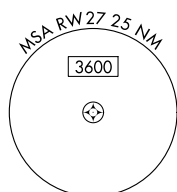
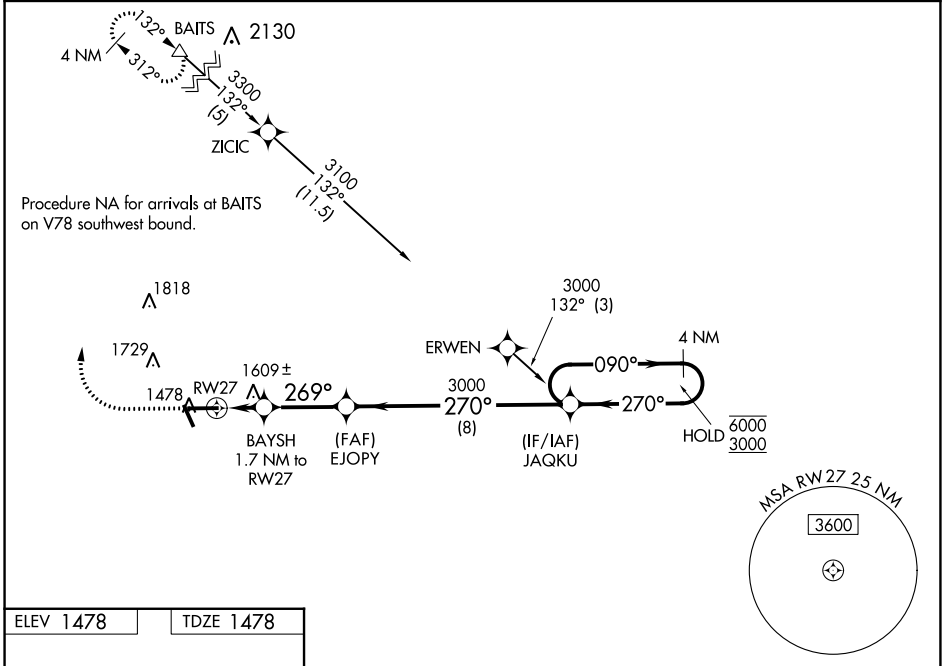
WAAS CH 66011 W27A	APP CRS 269°	Rwy Idg TDZE 1478 Apt Elev 1478	6000
--	------------------------	---	-------------

RNAV (GPS) RWY 27

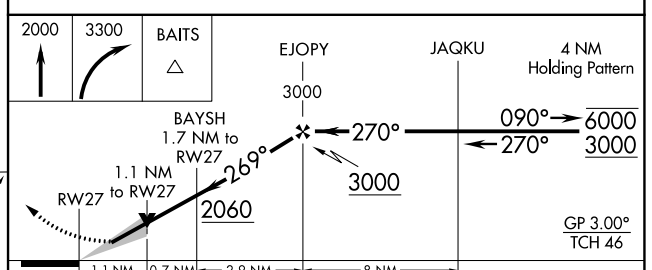
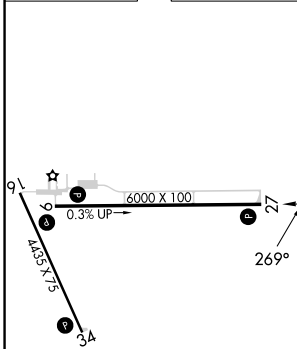
TAYLOR COUNTY (MDZ)

RNP APCH-GPS.	MISSED APPROACH: Climb to 2000 then climbing right turn to 3300 direct BAITS and hold.
⚠ For uncompensated Baro-VNAV systems, LNAV/VNAV NA below -17°C or above 54°C.	

AWOS-3 119.025	MINNEAPOLIS CENTER 124.4 317.7	UNICOM 122.8 (CTAF) 0
--------------------------	--	---------------------------------



ELEV 1478	TDZE 1478
-----------	-----------



CATEGORY	A	B	C	D
LPV DA		1678- ³ / ₄	200 (200- ³ / ₄)	
LNAV/VNAV DA		1877-1 ¹ / ₈	399 (400-1 ¹ / ₈)	
LNAV MDA	1860-1	382 (400-1)	1860-1 ¹ / ₈	382 (400-1 ¹ / ₈)
C CIRCLING	1900-1 422 (500-1)	2040-1 562 (600-1)	2040-1 ¹ / ₂ 562 (600-1 ¹ / ₂)	2180-2 ¹ / ₄ 702 (800-2 ¹ / ₄)

REIL Rwy 9, 27 and 34 0
MIRL Rwy 9-27 and 16-34 0

EC-3, 11 JUL 2024 to 08 AUG 2024

EC-3, 11 JUL 2024 to 08 AUG 2024