

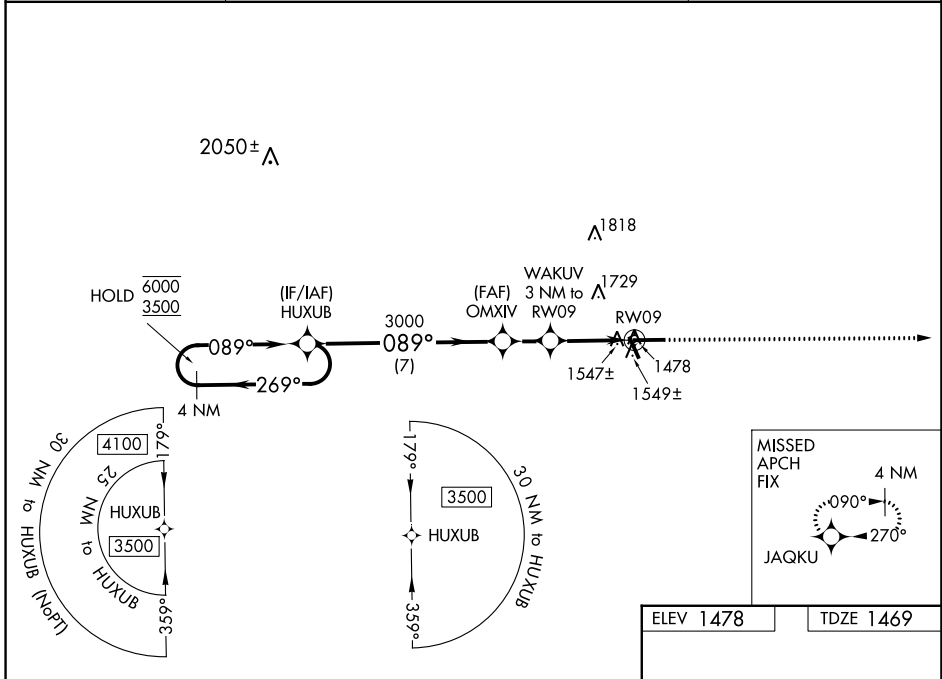
WAAS CH <b>99331</b> <b>W09A</b>	APP CRS <b>089°</b>	Rwy Idg TDZE Apt Elev	<b>6000</b> <b>1469</b> <b>1478</b>
--	------------------------	-----------------------------	---

# RNAV (GPS) RWY 9

TAYLOR COUNTY (MDZ)

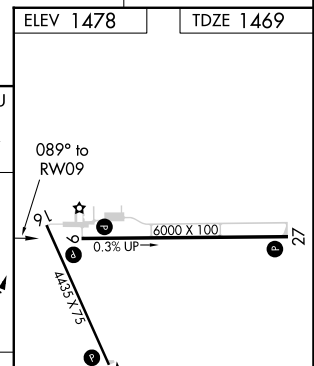
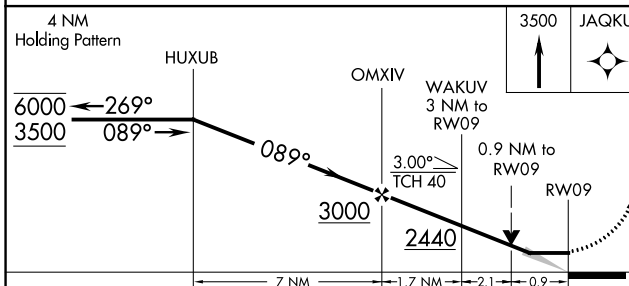
RNP APCH.	MISSED APPROACH: Climb to 3500 direct JAQKU and hold.
-----------	---

AWOS-3 <b>119.025</b>	MINNEAPOLIS CENTER <b>124.4 317.7</b>	UNICOM <b>122.8 (CTAF) 0</b>
--------------------------	--	---------------------------------



EC-3, 11 JUL 2024 to 08 AUG 2024

EC-3, 11 JUL 2024 to 08 AUG 2024



CATEGORY	A	B	C	D
LP MDA	1800-1	331 (400-1)		
LNAV MDA	1800-1	331 (400-1)		
CIRCLING	1900-1 422 (500-1)	2040-1 562 (600-1)	2040-1½ 562 (600-1½)	2180-2¼ 702 (800-2¼)

ELEV 1478	TDZE 1469
REIL Rwy 9, 27 and 34 0	
MRL Rwy 9-27 and 16-34 0	