

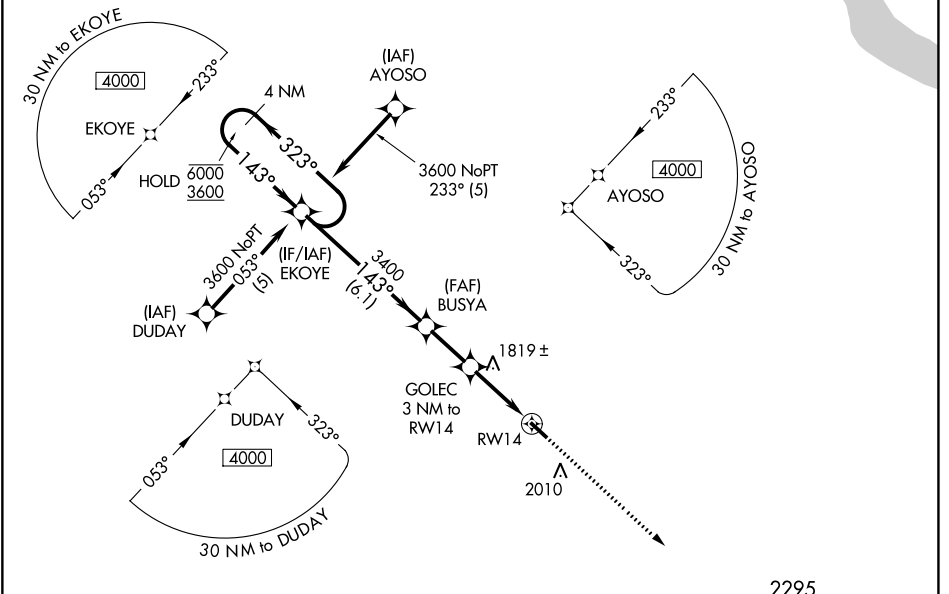
APP CRS	Rwy Idg	<b>4101</b>
<b>143°</b>	TDZE	<b>1746</b>
	Apt Elev	<b>1766</b>

# RNAV (GPS) RWY 14

CORRY-LAWRENCE (8G2)

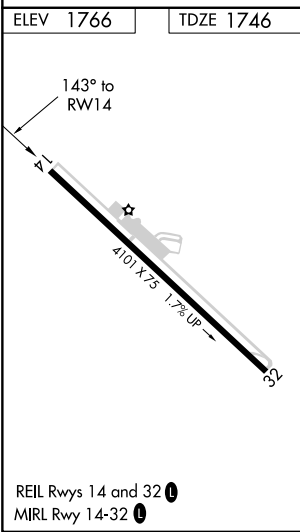
RNP APCH-GPS.		MISSED APPROACH: Climb to 3600 direct CUXOM and hold.
<p>Procedure NA at night. Rwy 14 helicopter visibility reduction below 1 SM NA. Use Jamestown NY altimeter setting; when not received, use Meadville altimeter setting and increase all MDA 80 feet; increase LNAV Cat C visibility 1/4 SM.</p>		

JHW AWOS-3PT <b>118.425</b>	BUFFALO APP CON * <b>121.0 257.8</b>	UNICOM <b>122.8 (CTAF) 0</b>
--------------------------------	---	---------------------------------



NE-4, 11 JUL 2024 to 08 AUG 2024

NE-4, 11 JUL 2024 to 08 AUG 2024



<p>4 NM Holding Pattern EKOYE</p> <p>6000 ← 323° 3600 → 143°</p> <p>3600 CUXOM</p>			
<p>BUSYA</p> <p>3400</p> <p>3.04° TCH 40</p> <p>2700</p> <p>GOLEK 3 NM to RWY 14</p> <p>RWY 14</p>			
6.1 NM		2.2 NM	
3 NM			
CATEGORY	A	B	C
LNAV MDA	2140-1	394 (400-1)	2140-1 1/8 394 (400-1 1/8)
			NA