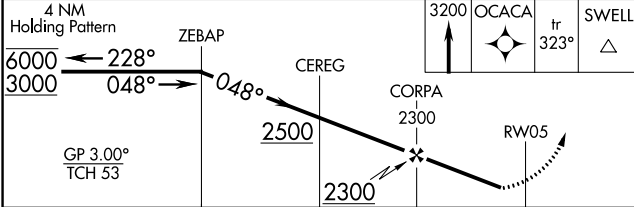
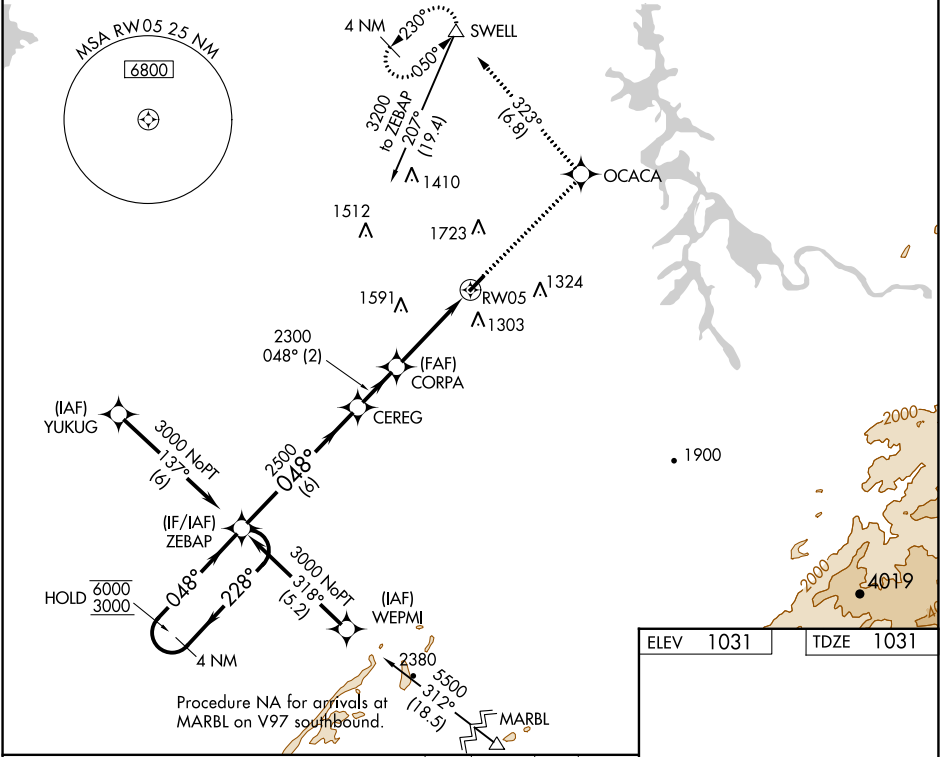


WAAS CH <b>99531</b>	APP CRS <b>048°</b>	Rwy Idg TDZE Apt Elev	<b>3643</b> <b>1031</b> <b>1031</b>
<b>W05A</b>			

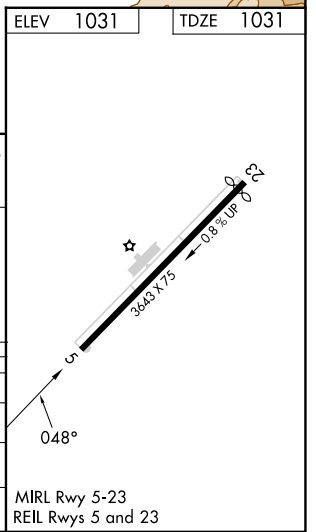
# RNAV (GPS) RWY 5

MONROE COUNTY (MNV)

RNP APCH - GPS.		<p>MISSED APPROACH: Climb to 3200 direct OCACA and on track 323° to SWELL and hold.</p>
<p>AWOS-3 <b>118.475</b></p>	<p>KNOXVILLE APP CON <b>123.9 353.6</b></p>	
		<p>UNICOM <b>123.0</b> (CTAF)</p>



CATEGORY	A	B	C	D
LPV DA	1395-1	364 (400-1)		NA
LNAV/VNAV DA	1538-1 <sup>3</sup> / <sub>8</sub>	507 (600-1 <sup>3</sup> / <sub>8</sub> )		NA
LNAV MDA	1680-1	649 (700-1)	1680-1 <sup>7</sup> / <sub>8</sub> 649 (700-1 <sup>7</sup> / <sub>8</sub> )	NA
<b>C</b> CIRCLING	1680-1	649 (700-1)	1680-1 <sup>7</sup> / <sub>8</sub> 649 (700-1 <sup>7</sup> / <sub>8</sub> )	NA



SE-1, 11 JUL 2024 to 08 AUG 2024

SE-1, 11 JUL 2024 to 08 AUG 2024