

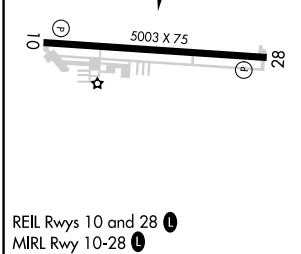
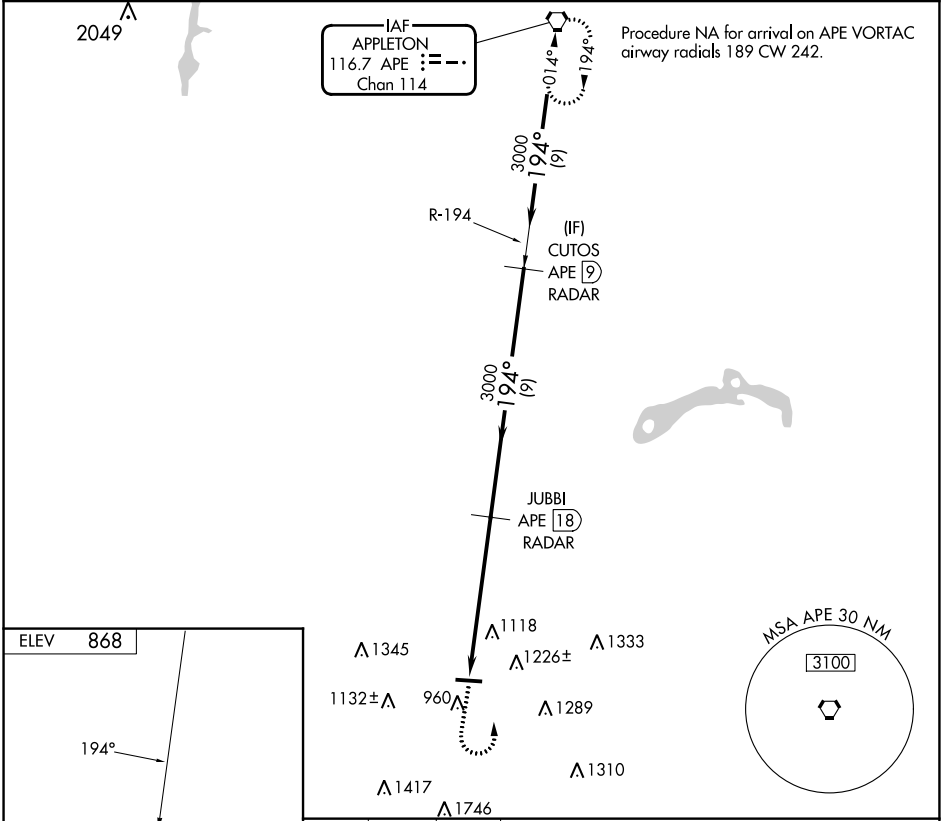
VORTAC APE 116.7 Chan 114	APP CRS 194°	Rwy Idg TDZE Apt Elev N/A N/A 868
---	------------------------	---

VOR-A

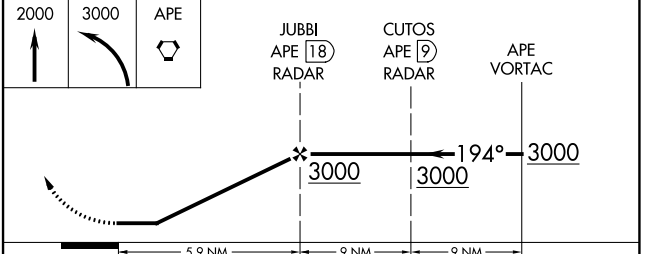
FAIRFIELD COUNTY (L.H.Q.)

DME or RADAR required.	MISSED APPROACH: Climb to 2000 then climbing left turn to 3000 direct APE VORTAC and hold.
<p>▼ When local altimeter setting not received, use Rickenbacker Intl altimeter setting and increase all MDAs 60 feet and visibility Cat C ¼ SM. Circling Rwy 28 NA at night. Rwy 28 helicopter visibility reduction below 1 SM NA.</p>	

ASOS 118.375	COLUMBUS APP CON 134.0 279.6	CLNC DEL 121.65	UNICOM 122.725 (CTAF) 📞
------------------------	--	---------------------------	--



REIL Rws 10 and 28 📞	MIRL Rwy 10-28 📞				
FAF to MAP 5.9 NM					
Knots	60	90	120	150	180
Min:Sec	5:54	3:56	2:57	2:22	1:58



CATEGORY	A	B	C	D
CIRCLING	1500-1 632 (700-1)	1540-1 672 (700-1)	1620-2¼ 752 (800-2¼)	NA

EC-2, 11 JUL 2024 to 08 AUG 2024

EC-2, 11 JUL 2024 to 08 AUG 2024