

APP CRS	Rwy Idg	3302
043°	TDZE	648
	Apt Elev	648

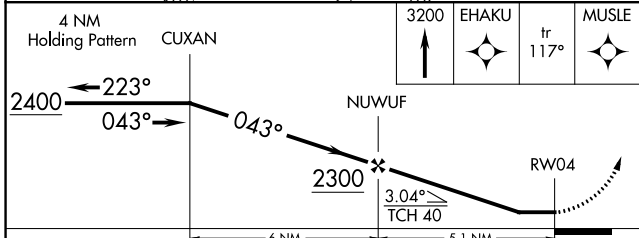
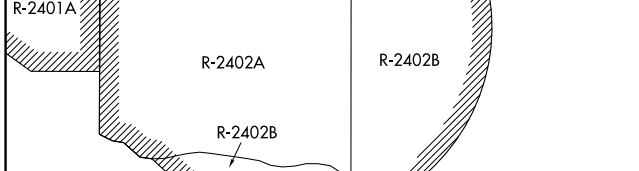
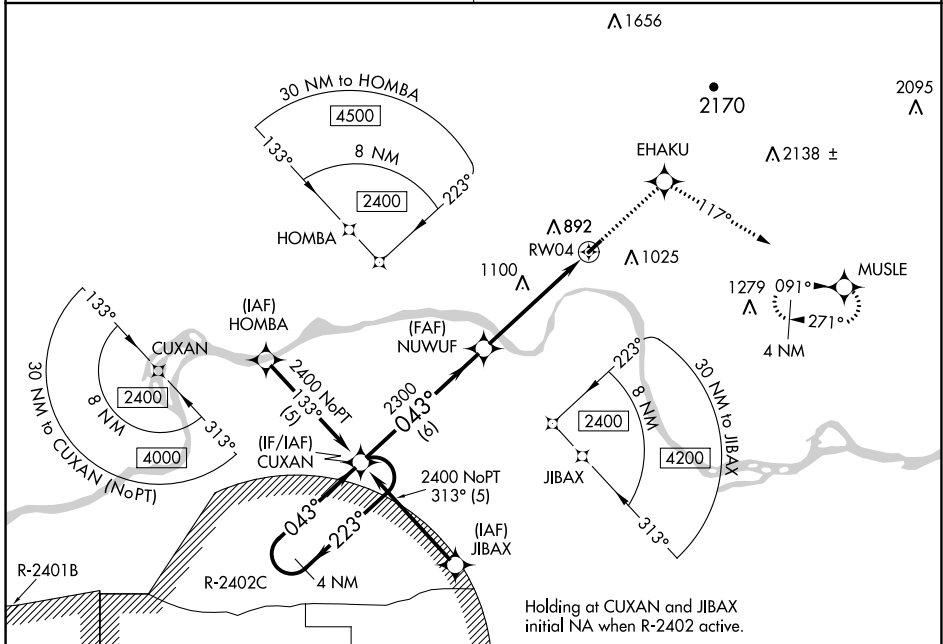
RNAV (GPS) RWY 4

OZARK/FRANKLIN COUNTY (7M5)

▼ DME/DME RNP-0.3 NA. Visibility reduction by helicopters NA. Use Fort Smith altimeter setting; when not received, use Drake Fld altimeter setting and increase all MDAs 80 feet; increase LNAV Cat A/C and Circling Cat C visibility ¼ SM.
▲ NA MISSED APPROACH: Climb to 3200 direct EHAKU and on track 117° to MUSLE and hold.

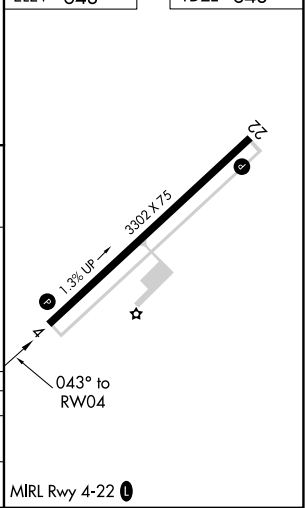
RAZORBACK APP CON ★
120.9 343.75

UNICOM
122.8 (CTAF) 0



ELEV 648	TDZE 648
----------	----------

CATEGORY	A	B	C	D
LNAV MDA	1480-1 832 (900-1)	1480-1¼ 832 (900-1¼)	1480-2½ 832 (900-2½)	NA
CIRCLING	1480-1¼ 832 (900-1¼)		1500-2½ 852 (900-2½)	NA



SC-1, 11 JUL 2024 to 08 AUG 2024

SC-1, 11 JUL 2024 to 08 AUG 2024