

WAAS CH <b>63125</b> <b>W21A</b>	APP CRS <b>207°</b>	Rwy Idg TDZE Apt Elev	<b>5500</b> <b>35</b> <b>36</b>
--	------------------------	-----------------------------	---------------------------------------

# RNAV (GPS) RWY 21

PLYMOUTH MUNI (PMZ)

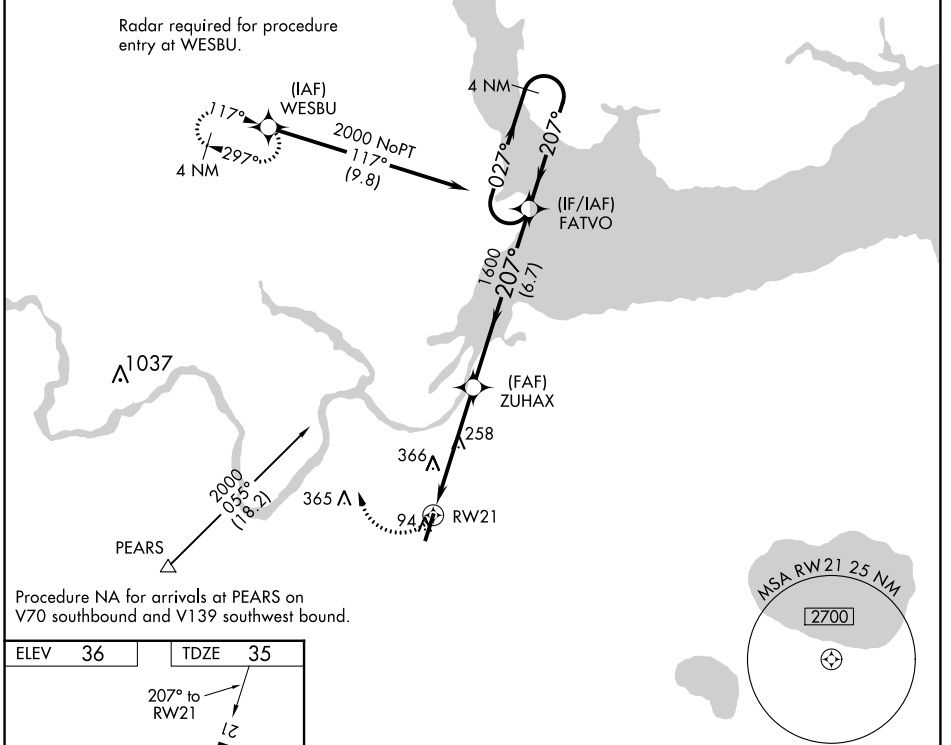
**NA** Use Northeastern Rgnl altimeter setting; when not received, use Coastal Carolina Rgnl altimeter setting and increase all MDA 80 feet; increase all Cat C visibilities ¼ SM. When VGSI inop, procedure NA at night. DME/DME RNP-0.3 NA.

MISSED APPROACH: Climbing right turn to 2000 direct WESBU and hold.

CHERRY POINT APP CON  
**119.35 377.175**

UNICOM  
**122.8 (CTAF)**

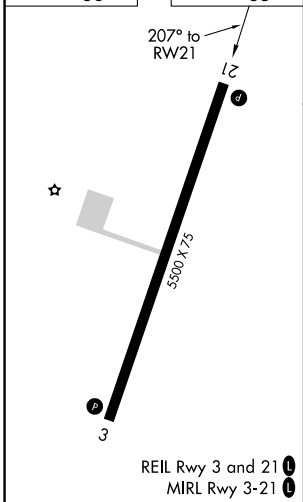
Radar required for procedure entry at WESBU.



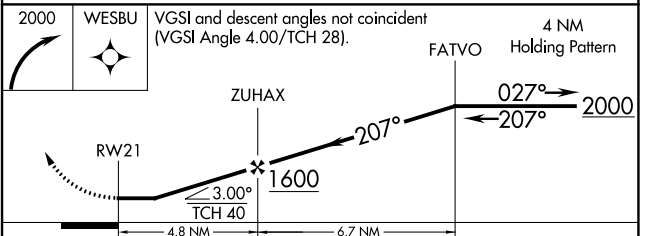
SE-2, 11 JUL 2024 to 08 AUG 2024

SE-2, 11 JUL 2024 to 08 AUG 2024

ELEV 36 TDZE 35



REIL Rwy 3 and 21  
MIRL Rwy 3-21



CATEGORY	A	B	C	D
LP MDA	600-1	565 (600-1)	600-1½ 565 (600-1½)	NA
LNAV MDA	660-1	625 (700-1)	660-1¾ 625 (700-1¾)	NA
CIRCLING	660-1 624 (700-1)	720-1 684 (700-1)	720-2 684 (700-2)	NA