

| | | | |
|--|------------------------|-----------------------------|---|
| WAAS CH 78428 W08A | APP CRS 080° | Rwy Idg TDZE Apt Elev | 4601 831 836 |
|--|------------------------|-----------------------------|---|

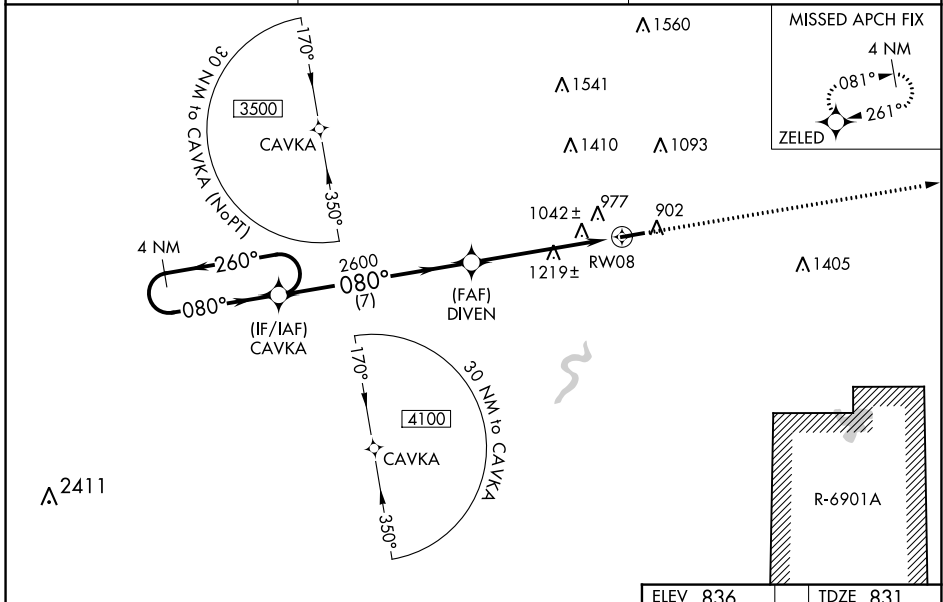
RNAV (GPS) RWY 8

BLACK RIVER FALLS AREA (BCK)

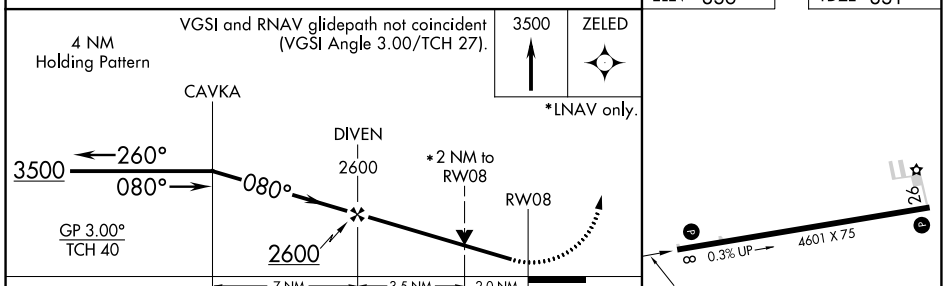
⚠ Baro-VNAV NA when using La Crosse altimeter setting. For uncompensated Baro-VNAV systems, LNAV/VNAV NA below -16°C (4°F) or above 38° C (100°F), DME/DME RNP-0.3 NA. Visibility reduction by helicopters NA. VDP NA with La Crosse altimeter setting. When local altimeter setting not received, use La Crosse altimeter setting: increase LPV DA to 1172 feet and visibility all Cats ¼ SM; increase LNAV/VNAV DA to 1441 feet and visibility all Cats ½ SM; increase all MDA 100 feet and visibility LNAV Cat B ¼ SM, Cat C and D ½ SM and Circling Cat C ¼ SM.

MISSED APPROACH:
Climb to 3500 direct ZELED and hold.

| | | |
|----------------------------|--|----------------------|
| AWOS-3PT 119.125 | MINNEAPOLIS CENTER 128.6 363.0 | CTAF 122.9 |
|----------------------------|--|----------------------|



| | |
|----------|----------|
| ELEV 836 | TDZE 831 |
|----------|----------|



| CATEGORY | A | B | C | D |
|--------------|--------|-------------|-----------------------|------------------------|
| LPV DA | | 1081-7/8 | 250 (300-7/8) | |
| LNAV/VNAV DA | | 1350-13/4 | 519 (600-13/4) | |
| LNAV MDA | 1480-1 | 649 (700-1) | 1480-17/8 | 649 (700-17/8) |
| CIRCLING | 1480-1 | 644 (700-1) | 1520-2 684 (700-2) | 1760-3 924 (1000-3) |

REIL Rwy 8 and 26 **Ⓛ**
MIRL Rwy 8-26 **Ⓛ**

EC-3, 11 JUL 2024 to 08 AUG 2024

EC-3, 11 JUL 2024 to 08 AUG 2024