

VORTAC AEX 116.1 Chan 108	APP CRS 110°	Rwy Idg TDZE Apt Elev N/A N/A 79
---	------------------------	--

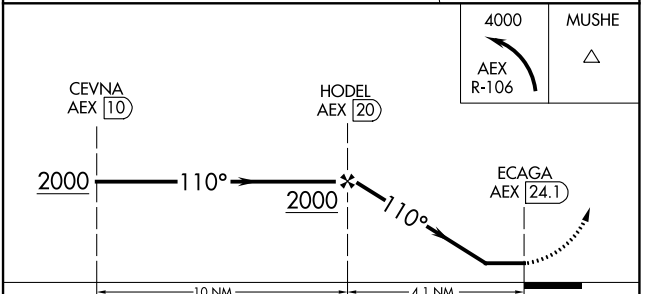
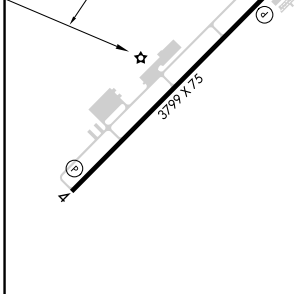
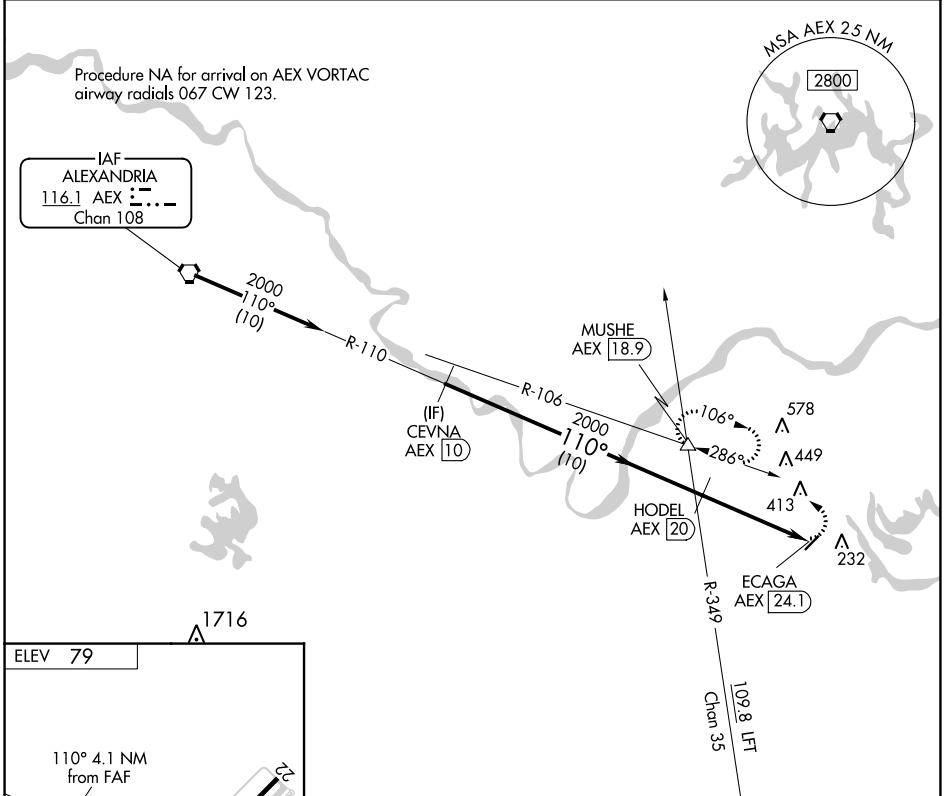
VOR-A
MARKSVILLE MUNI (MKV)

DME required.

NA Circling Rwy 22 NA at night. Use Esler Rgnl altimeter setting.
When not received, use Alexandria Intl altimeter setting.

MISSED APPROACH: Climbing left turn to 4000 on AEX VORTAC R-106 to MUSHE INT/AEX 18.9 DME and hold, continue climb-in-hold to 4000.

ESF ASOS 119,425	POLK APP CON 125.4 302.2	CTAF 122.9 0
----------------------------	------------------------------------	-------------------------------



MIRL Rwy 4-22 0	REIL Rwys 4 and 22 0	CEVNA AEX 10	HODEL AEX 20	ECAGA AEX 24.1	4000 MUSHE AEX R-106 △
CATEGORY		A	B	C	D
0 CIRCLING		760-1 681 (700-1)	820-1¼ 741 (800-1¼)	NA	

SC-4, 11 JUL 2024 to 08 AUG 2024

SC-4, 11 JUL 2024 to 08 AUG 2024