

APP CRS	Rwy Idg	3397
250°	TDZE	70
	Apt Elev	70

RNAV (GPS) RWY 25

WISCASSET (IWI)

RNP APCH.

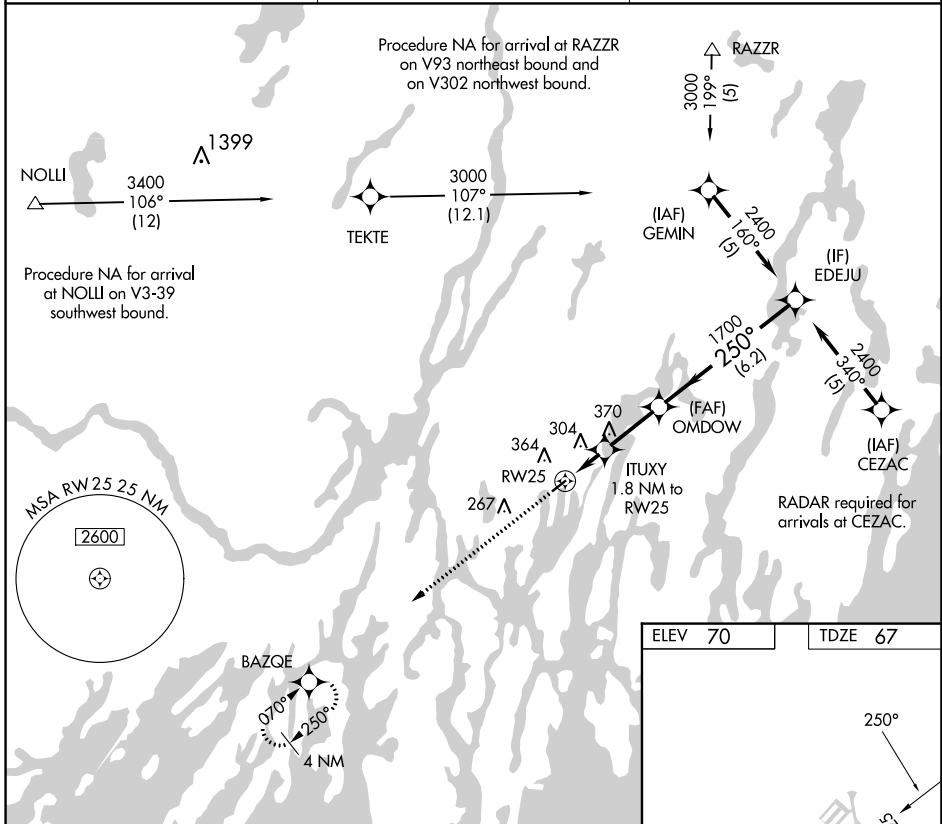
⚠ Procedure NA at night. Rwy 25 helicopter visibility reduction below 1 SM NA. When local altimeter setting not received use Rockland altimeter setting and increase all MDA 80 feet.

MISSED APPROACH: Climb to 3000 direct BAZQE and hold.

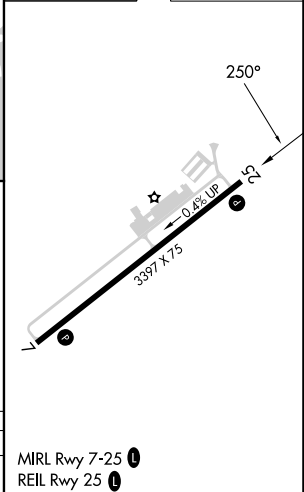
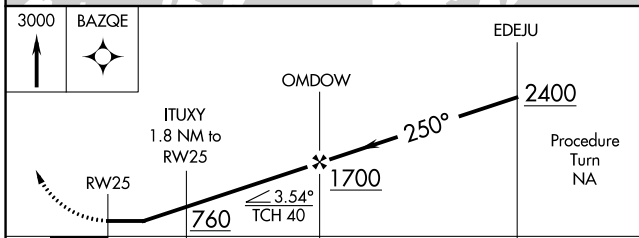
ASOS
135.725

PORTLAND APP CON★
119.75 269.35 (112°-292°)
120.4 299.2 (293°-111°)

UNICOM
122.8 (CTAF) 📻



ELEV 70	TDZE 67
---------	---------



CATEGORY	A	B	C	D
LNAV MDA	580-1	513 (600-1)	NA	

NE-1, 11 JUL 2024 to 08 AUG 2024

NE-1, 11 JUL 2024 to 08 AUG 2024