

APP CRS	Rwy Idg	<b>3716</b>
<b>356°</b>	TDZE	<b>1498</b>
	Apr Elev	<b>1514</b>

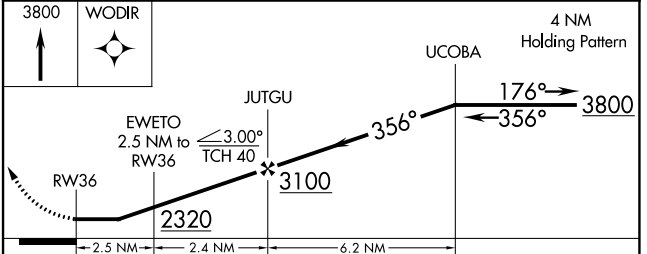
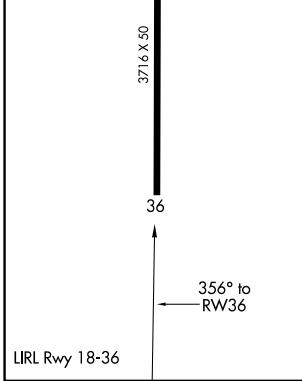
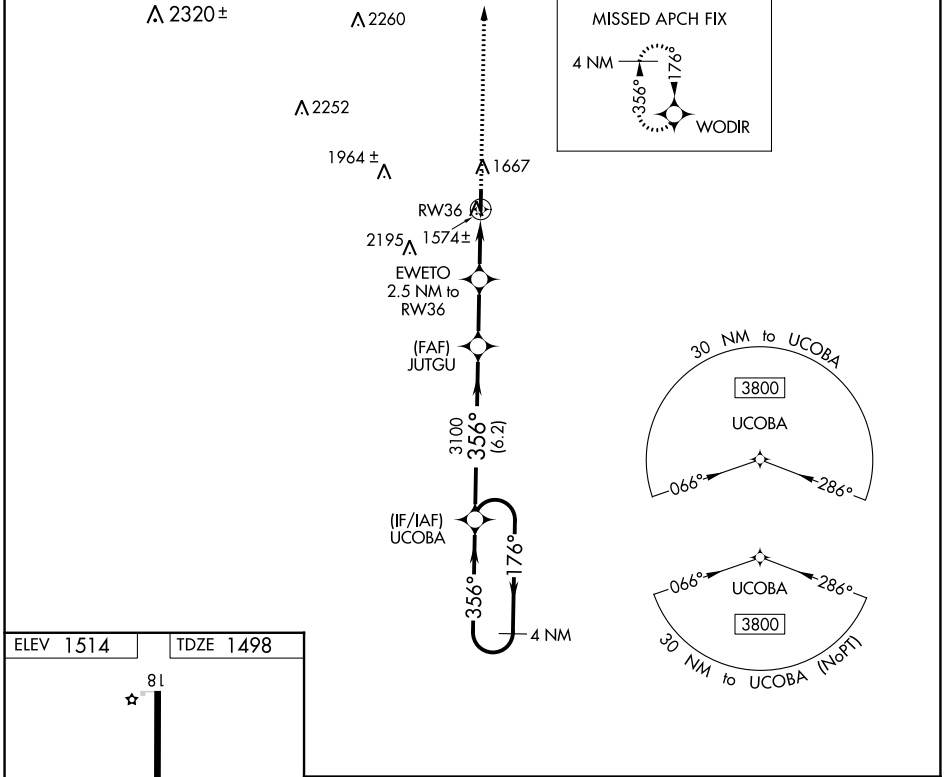
# RNAV (GPS) RWY 36

MASON COUNTY (T92)

**▼** Rwy 18/36 helicopter visibility reduction below 1 SM NA.  
**▲** NA DME/DME RNP-0.3 NA. Procedure NA at night.  
 Use Brady altimeter setting; when not received, use Llano altimeter setting and increase all MDAs 20 feet.

MISSED APPROACH: Climb to 3800 direct WODIR and hold.

BBD AWOS-3 <b>118.375</b>	HOUSTON CENTER <b>132.35 317.5</b>	CTAF <b>122.9</b>
------------------------------	---------------------------------------	----------------------



CATEGORY	A	B	C	D
LNAV MDA	1940-1	442 (500-1)		NA
<b>C</b> CIRCLING	2140-1	626 (700-1)		NA