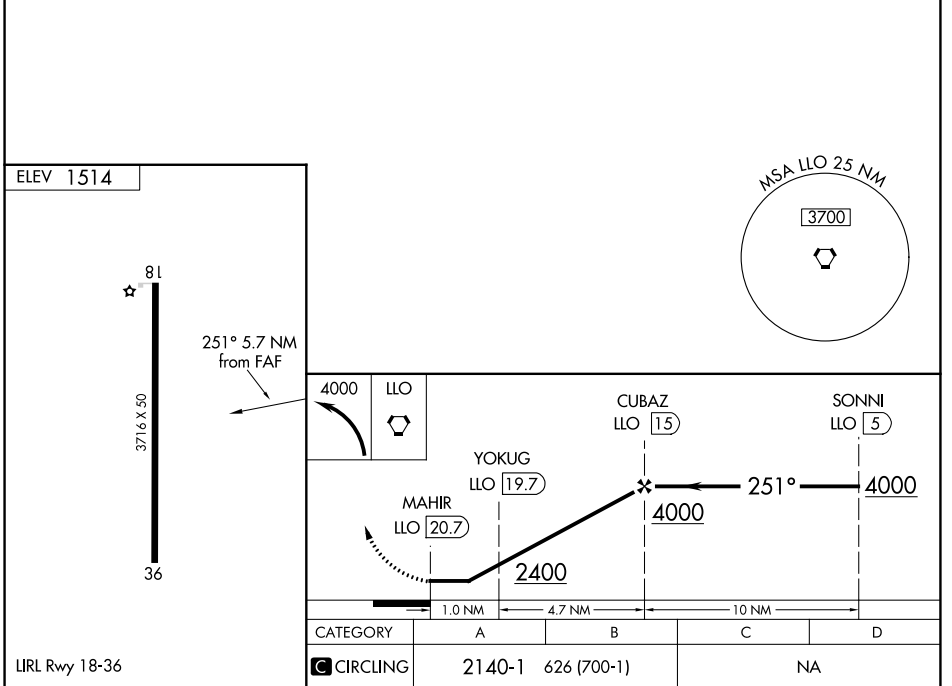
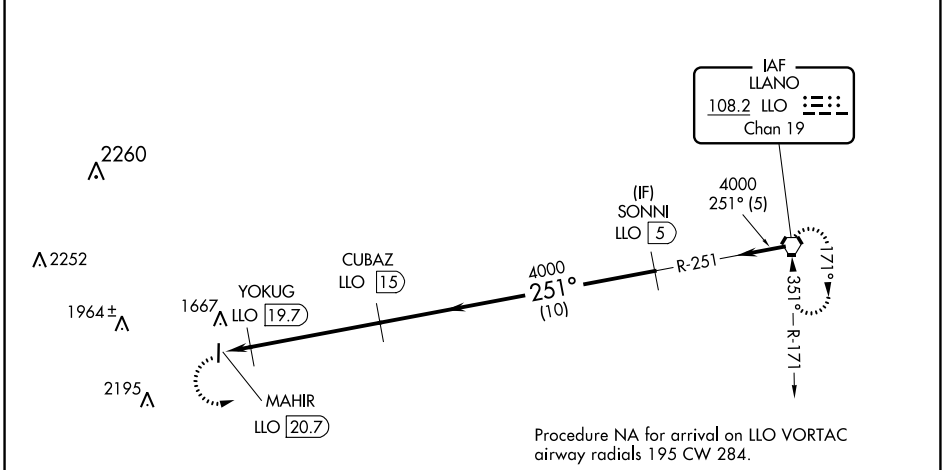


VORTAC LLO 108.2 Chan 19	APP CRS 251°	Rwy Idg TDZE Apt Elev N/A N/A 1514
--	------------------------	--

VOR-A
MASON COUNTY (T92)

<p>▼ Rwy 18/36 helicopter visibility reduction below 1 SM NA. ▲ NA DME required. Procedure NA at night. Use Brady altimeter setting; when not received, use Llano altimeter setting.</p>		<p>MISSED APPROACH: Climbing left turn to 4000 direct LLO VORTAC and hold.</p>
BBD AWOS-3 118.375	HOUSTON CENTER 132.35 317.5	CTAF 122.9



SC-3, 11 JUL 2024 to 08 AUG 2024

SC-3, 11 JUL 2024 to 08 AUG 2024