

WAAS CH <b>56524</b> <b>W04A</b>	APP CRS <b>040°</b>	Rwy Idg <b>4401</b> TDZE <b>34</b> Apt Elev <b>35</b>
--	------------------------	---

# RNAV (GPS) RWY 4

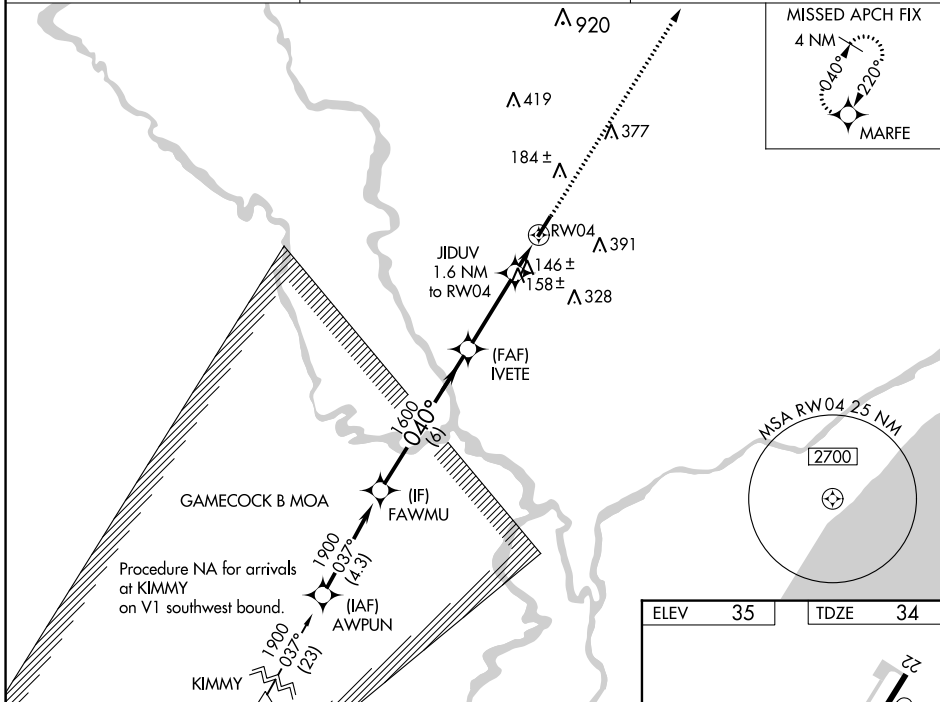
CONWAY-HORRY COUNTY (HYW)

RNP APCH.

**⚠** When Circling to Rwy 22 at night, operational VGSI required, on or above VGSI glidepath until threshold. Rwy 4 helicopter visibility reduction below 3/4 SM NA. For uncompensated Baro-VNAV systems, LNAV/VNAV NA below -15°C or above 54°C.

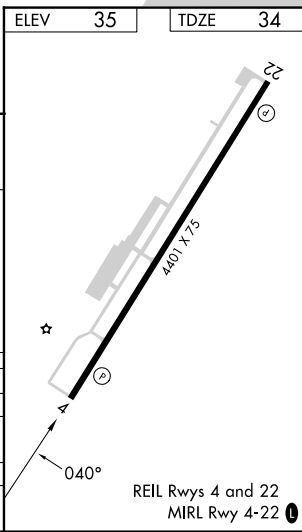
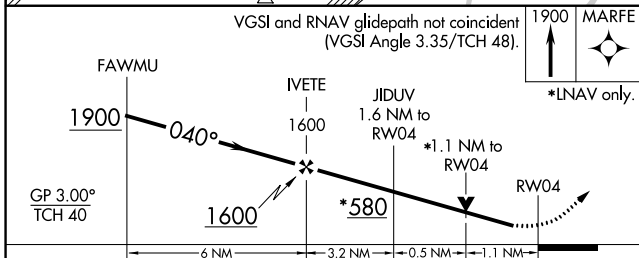
MISSED APPROACH: Climb to 1900 direct MARFE and hold.

AWOS-3 <b>119.525</b>	MYRTLE BEACH APP CON★ <b>127.4 257.95</b>	UNICOM <b>122.7 (CTAF)</b>
--------------------------	--	-------------------------------



SE-2, 11 JUL 2024 to 08 AUG 2024

SE-2, 11 JUL 2024 to 08 AUG 2024



ELEV	35		TDZE	34		
CATEGORY	A		B		C	
LPV DA	315-7/8		281 (300-7/8)			
LNAV/DA VNAV	525-13/8		491 (500-13/8)			
LNAV MDA	460-1	426 (500-1)	460-1/4	426 (500-1/4)		
CIRCLING	520-1	540-1	700-1 3/4	700-2		
	485 (500-1)	505 (600-1)	665 (700-1 3/4)	665 (700-2)		