

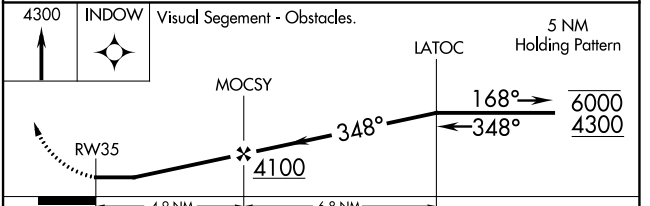
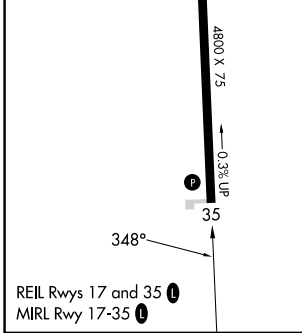
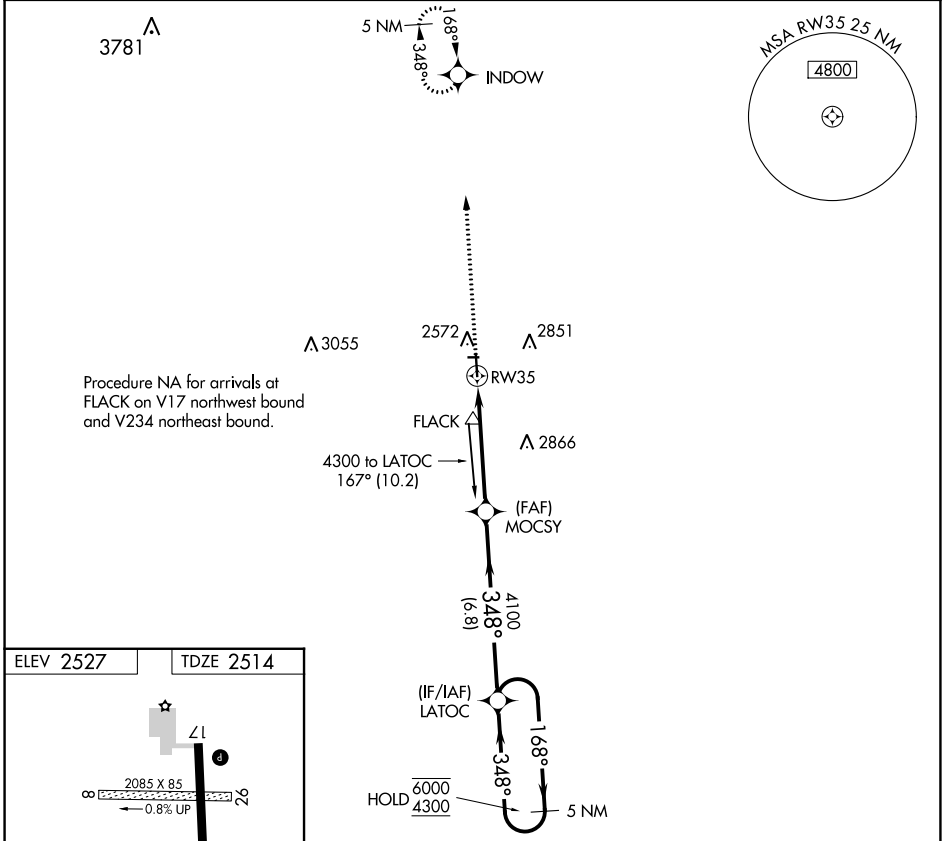
| | | |
|-------------|----------|-------------|
| APP CRS | Rwy Idg | 4800 |
| 348° | TDZE | 2514 |
| | Apt Elev | 2527 |

RNAV (GPS) RWY 35

MEADE MUNI (MEJ)

| | |
|--|---|
| RNP APCH | MISSED APPROACH: Climb to 4300 direct INDOW and hold. |
| <p>▼ Circling NA to Rws 8 and 26. Rwy 35 helicopter visibility reduction below 1 SM NA. When local altimeter setting not received, use liberal altimeter setting and increase all MDAs 140 feet.</p> <p>▲ NA</p> | |

| | | |
|----------------------------|--|---------------------------------|
| AWOS-3PT 119.425 | KANSAS CITY CENTER 134.0 257.625 | UNICOM 122.8 (CTAF) 0 |
|----------------------------|--|---------------------------------|



| CATEGORY | A | B | C | D |
|----------|-----------------------|-----------------------|----|---|
| LNAV MDA | 3000-1 | 486 (500-1) | NA | |
| CIRCLING | 3000-1 473 (500-1) | 3160-1 633 (700-1) | NA | |

NC-2, 11 JUL 2024 to 08 AUG 2024

NC-2, 11 JUL 2024 to 08 AUG 2024