

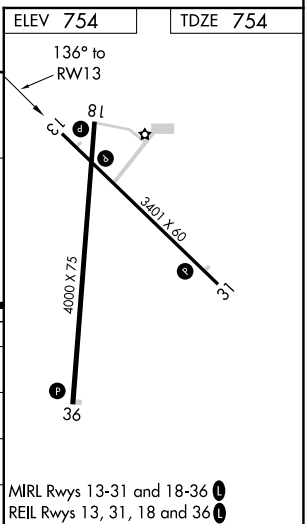
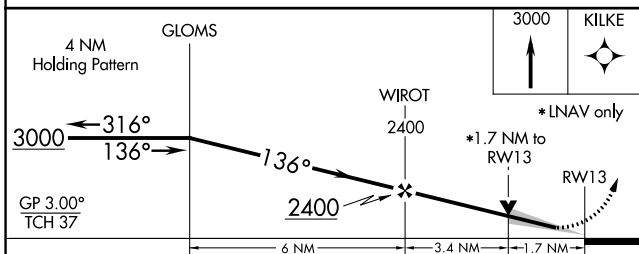
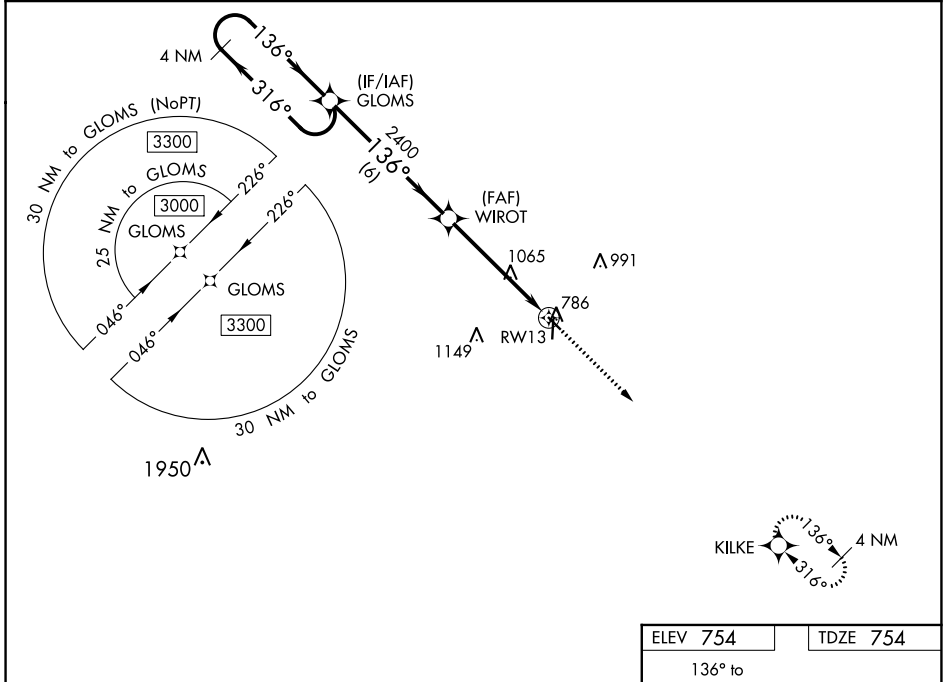
WAAS CH <b>63138</b> <b>W13A</b>	APP CRS <b>136°</b>	Rwy ldg <b>3401</b> TDZE <b>754</b> Apt Elev <b>754</b>
--	------------------------	---

# RNAV (GPS) RWY 13

WASHINGTON MUNI (A WG)

RNP APCH.	<p>▼ For uncompensated Baro-VNAV systems, LNAV/VNAV NA below -6°C (22°F) or above 54°C (130°F).</p> <p>▲ Baro-VNAV and VDP NA when using Iowa City altimeter setting. When local altimeter setting not received, use Iowa City altimeter setting; increase LPV DA to 1066 feet, LNAV/VNAV DA to 1282 feet; increase all MDAs 80 feet and visibility LNAV and Circling Cat C ¼ SM.</p>	MISSED APPROACH: Climb to 3000 direct KILKE and hold.
-----------	---	--

AWOS-3 <b>127.825</b>	CHICAGO CENTER <b>135.6 370.95</b>	UNICOM <b>122.7 (CTAF) 0</b>
--------------------------	---------------------------------------	---------------------------------



CATEGORY	A	B	C	D
LPV DA	1004-1 250 (300-1)			NA
LNAV/VNAV DA	1220-1½ 466 (500-1½)			NA
LNAV MDA	1320-1 566 (600-1)	1320-1½ 566 (600-1½)		NA
CIRCLING	1320-1 566 (600-1)	1500-2¼ 746 (800-2¼)		NA

NC-3, 11 JUL 2024 to 08 AUG 2024

NC-3, 11 JUL 2024 to 08 AUG 2024