

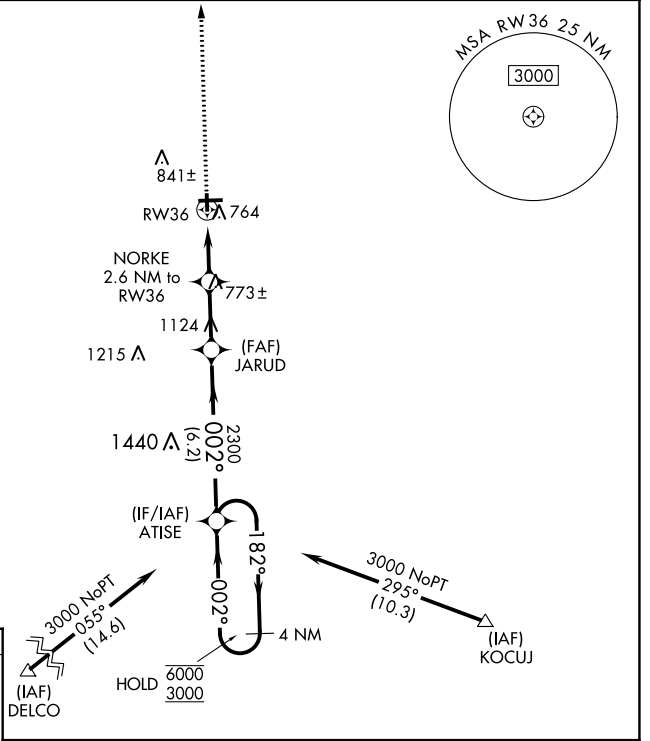
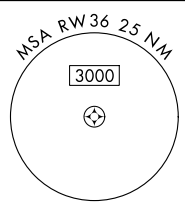
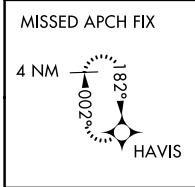
WAAS CH 78339 W36A	APP CRS 002°	Rwy Idg TDZE 3200 654 Apt Elev 654
--	------------------------	--

RNAV (GPS) RWY 36

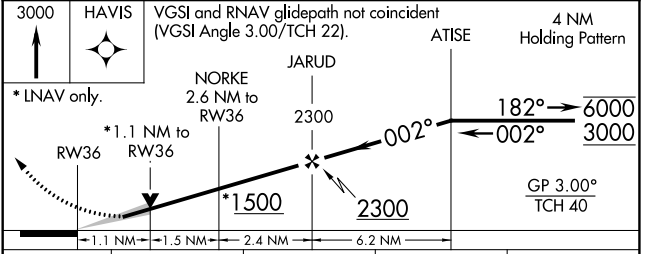
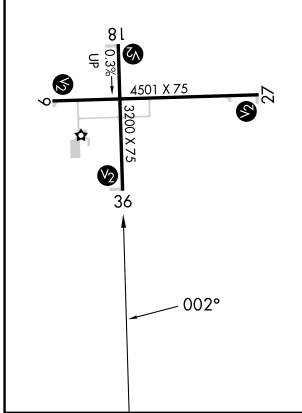
EDGAR COUNTY (PRG)

RNP APCH.	MISSED APPROACH: Climb to 3000 direct HAVIS and hold.
<p>⚠ For uncompensated Baro-VNAV systems, procedure NA below -16°C or above 54°C. ⚠ Circling Rwy 18 NA at night.</p>	

AWOS-3 124.175	HULMAN APP CON 125.45 339.8	UNICOM 123.0 (CTAF)
--------------------------	---------------------------------------	-------------------------------



ELEV 654	TDZE 654
REIL Rwy 27 MIRL Rwys 9-27 and 18-36	



3000	HAVIS	VGSi and RNAV glidepath not coincident (VGSi Angle 3.00/TCH 22).			
* LNAV only.		NORKE 2.6 NM to RW36		JARUD 2300	ATISE 4 NM Holding Pattern
RW36		*1.1 NM to RW36		2300	182° → 6000 ← 002° 3000
		*1.5 NM		2300	GP 3.00° TCH 40
		-1.1 NM -1.5 NM -2.4 NM -6.2 NM			
CATEGORY		A	B	C	D
LPV DA		904-1 250 (300-1)			
LNAV/VNAV DA		925-1 271 (300-1)			
LNAV MDA		1020-1 366 (400-1)			
CIRCLING		1080-1	1120-1	1200-1½	1320-2
		426 (500-1)	466 (500-1)	546 (600-1½)	666 (700-2)

EC-3, 11 JUL 2024 to 08 AUG 2024

EC-3, 11 JUL 2024 to 08 AUG 2024