

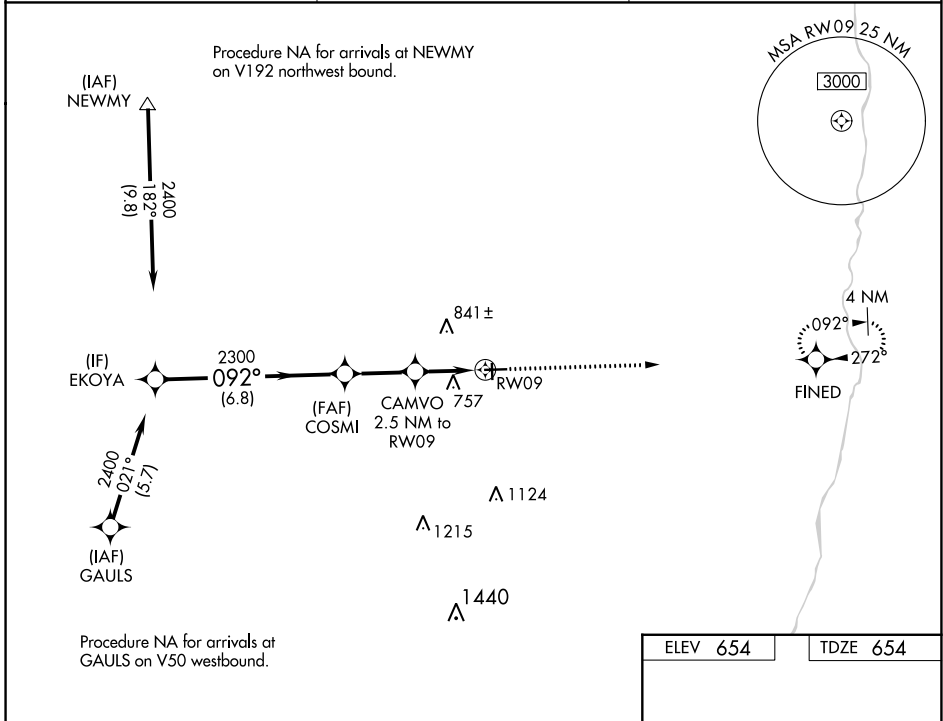
WAAS CH 50439 W09A	APP CRS 092°	Rwy Idg TDZE 654 Apt Elev 654
--	------------------------	---

RNAV (GPS) RWY 9

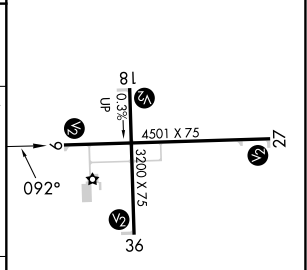
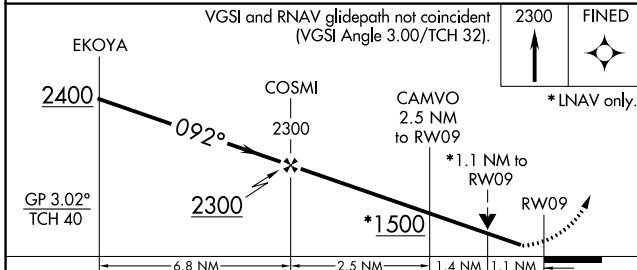
EDGAR COUNTY (PRG)

RNP APCH.	MISSED APPROACH: Climb to 2300 direct FINED and hold.
-----------	---

AWOS-3 124.175	HULMAN APP CON 125.45 339.8	UNICOM 123.0 (CTAF) 0
--------------------------	---------------------------------------	---------------------------------



ELEV 654	TDZE 654
----------	----------



CATEGORY	A	B	C	D
LPV DA	904-1 250 (300-1)			
LNAV/VNAV DA	908-1 254 (300-1)			
LNAV MDA	1020-1 366 (400-1)			
C CIRCLING	1080-1 426 (500-1)	1120-1 466 (500-1)	1200-1½ 546 (600-1½)	1320-2 666 (700-2)

REIL Rwy 27
MIRL Rwy 9-27 and 18-36 \bullet

EC-3, 11 JUL 2024 to 08 AUG 2024

EC-3, 11 JUL 2024 to 08 AUG 2024