

WAAS CH 42637 W04A	APP CRS 038°	Rwy Idg TDZE Apt Elev	5004 2387 2396
----------------------------------------	------------------------	-----------------------------	-------------------------------------------

RNAV (GPS) RWY 4

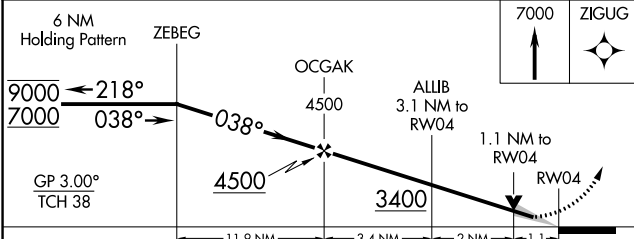
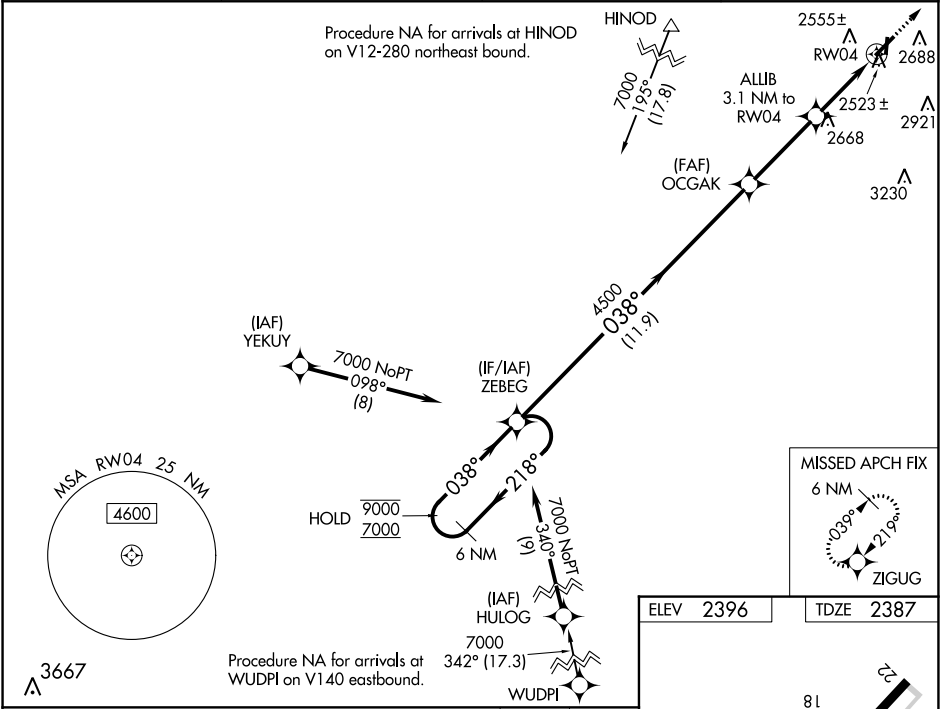
HEMPHILL COUNTY (HHF)

RNP APCH - GPS.

⚠ Circling NA to Rws 18 and 36. For uncompensated Baro-VNAV systems, LNAV/VNAV NA below -19°C or above 54°C. When local altimeter setting not received, use Gage altimeter setting and increase LPV DA to 2751; increase LNAV/VNAV DA to 2798 feet and all visibilities ¾ SM. Increase all MDAs 120 feet and LNAV visibility Cat C/D ¼ SM, and Circling visibility Cat C ¼ SM. VDP and Baro-VNAV NA when using Gage altimeter setting.

⚠ MISSED APPROACH: Climb to 7000 direct ZIGUG and hold, continue climb-in-hold to 7000.

AWOS-3 119.025	ALBUQUERQUE CENTER 127.85 285.475	KANSAS CITY CENTER 126.95 379.2	CTAF 122.9 0
--------------------------	---------------------------------------------	-------------------------------------------	------------------------



ELEV 2396	TDZE 2387
-----------	-----------

038° to RWY 4

MIRL Rwy 4-22 and 18-36 0
REIL Rws 4 and 22

CATEGORY	A	B	C	D
LPV DA		2637-1	250 (300-1)	
LNAV/VNAV DA		2684-1	297 (300-1)	
LNAV MDA	2780-1	393 (400-1)	2780-1½	393 (400-1½)
CIRCLING	3040-1	644 (700-1)	3280-2¾ 884 (900-2¾)	3340-3 944 (1000-3)

SC-2, 11 JUL 2024 to 08 AUG 2024

SC-2, 11 JUL 2024 to 08 AUG 2024