

POTEAU, OKLAHOMA

AL-6321 (FAA)

21280

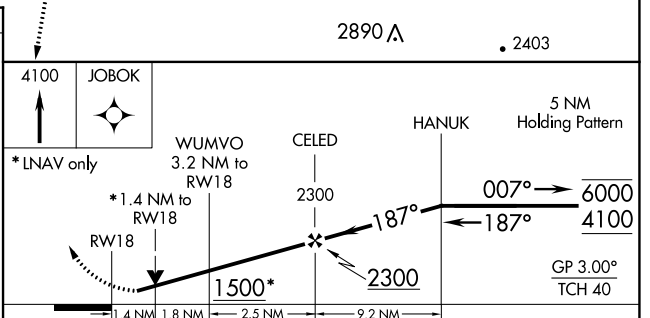
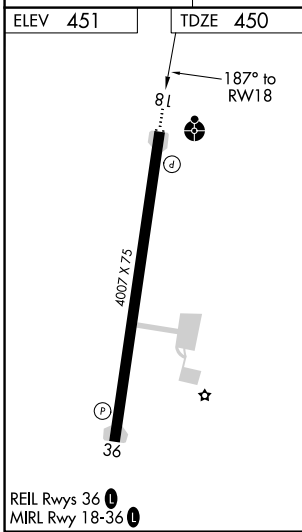
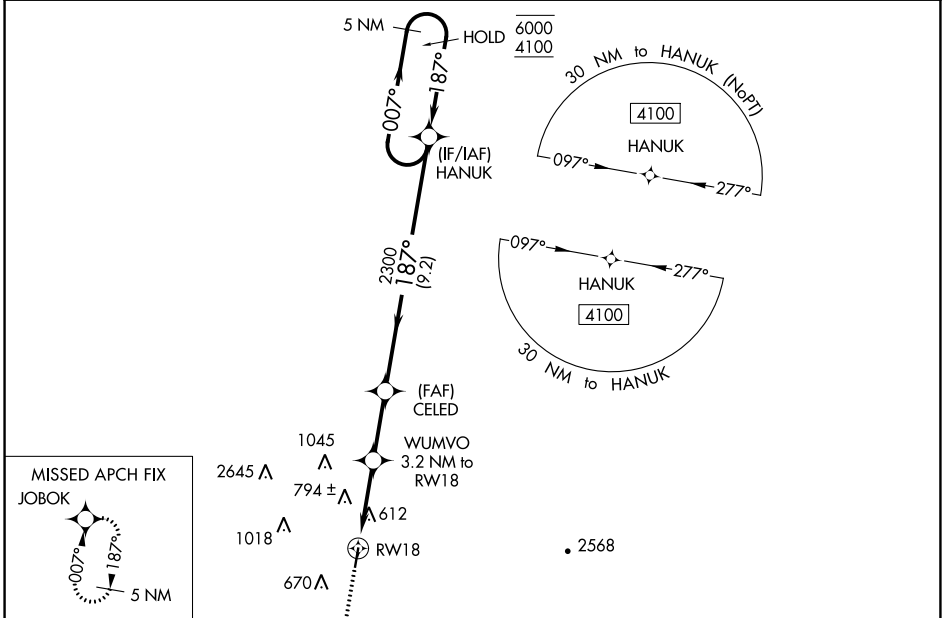
WAAS CH 56443 W18A	APP CRS 187°	Rwy Idg TDZE 450 Apt Elev 451	4007
--	------------------------	---	-------------

RNAV (GPS) RWY 18

ROBERT S KERR (RKR)

RNP APCH. Rwy 18 helicopter visibility reduction below 3/4 SM NA. For uncompensated Baro-VNAV systems, LNAV/VNAV NA below -15°C or above 54°C. Circling NA for Cats C and D west of Rwy 18-36.	ODALS 	MISSED APPROACH: Climb to 4100 direct JOBOK and hold, continue climb-in-hold to 4100.
--	-----------	---

AWOS-3 120.625	RAZORBACK APP CON * 120.9 343.75	UNICOM 122.8 (CTAF)
--------------------------	--	-------------------------------



CATEGORY	A	B	C	D
LPV DA		700-1	250 (300-1)	
LNAV/VNAV DA		926-1 3/8	476 (500-1 3/8)	
LNAV MDA	940-1	490 (500-1)	940-1 3/8	490 (500-1 3/8)
CIRCLING	1000-1 549 (600-1)	1100-1 649 (700-1)	1100-1 3/4 649 (700-1 3/4)	1160-2 1/4 709 (800-2 1/4)

POTEAU, OKLAHOMA
Amdt 1 05DEC19

35° 01' N-94° 37' W

ROBERT S KERR (RKR)

RNAV (GPS) RWY 18

SC-1, 11 JUL 2024 to 08 AUG 2024

SC-1, 11 JUL 2024 to 08 AUG 2024