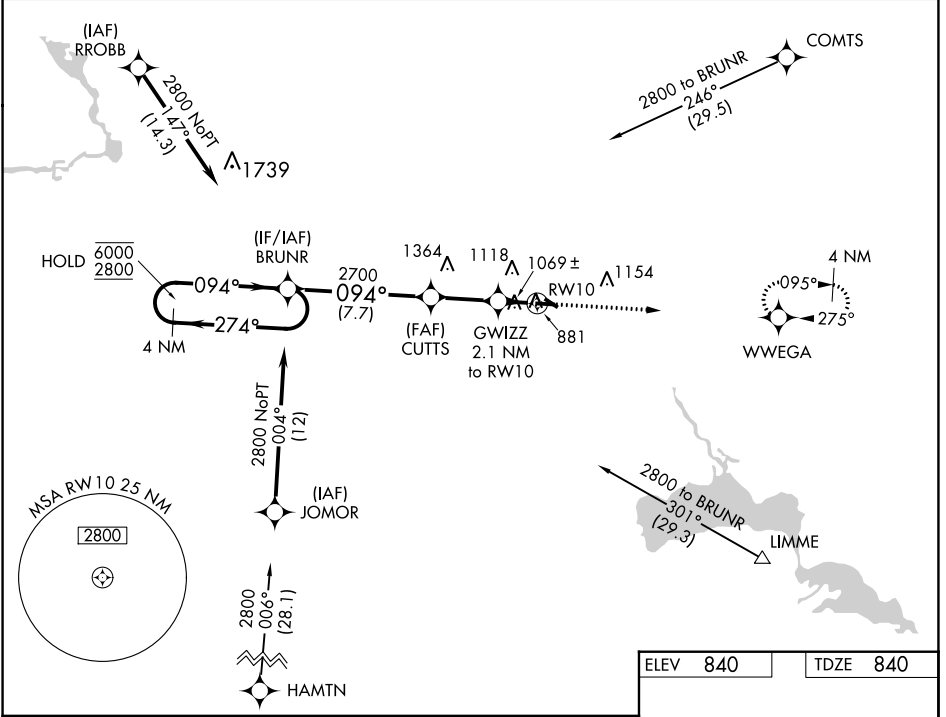


WAAS CH 63120 W10A	APP CRS 094°	Rwy Idg TDZE Apt Elev	5200 840 840
--	------------------------	-----------------------------	---

RNAV (GPS) RWY 10

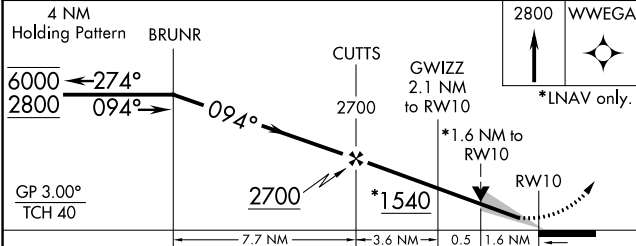
WAUPACA MUNI (PCZ)

RNP APCH.		MISSED APPROACH: Climb to 2800 direct WWEGA and hold.
▽ For uncompensated Baro-VNAV systems, LNAV/VNAV		
△ NA below -16°C or above 54°C.		
AWOS-3 118.625	MINNEAPOLIS CENTER 124.4 317.7	UNICOM 122.8 (CTAF) 0



EC-3, 11 JUL 2024 to 08 AUG 2024

EC-3, 11 JUL 2024 to 08 AUG 2024



ELEV 840	TDZE 840
2800 WWEGA	*LNAV only.
094°	13
094°	3899 X 75
094°	5200 X 100
094°	0.6% UP
094°	0.7% UP
094°	82
094°	31

CATEGORY	A	B	C	D
LPV DA		1090- ³ / ₄	250 (300- ³ / ₄)	
LNAV/VNAV DA		1384-1 ⁵ / ₈	544 (600-1 ⁵ / ₈)	
LNAV MDA	1380-1	540 (600-1)	1380-1 ¹ / ₂	540 (600-1 ¹ / ₂)
C CIRCLING	1380-1 540 (600-1)	1420-1 580 (600-1)	1420-1 ¹ / ₂ 580 (600-1 ¹ / ₂)	1500-2 660 (700-2)