

CRAIG, COLORADO

AL-6338 (FAA)

24081

WAAS CH 61341 W07A	APP CRS 074°	Rwy Idg TDZE Apt Elev	5606 6193 6198
--	------------------------	-----------------------------	---

RNAV (GPS) RWY 7

CRAIG-MOFFAT (CAG)

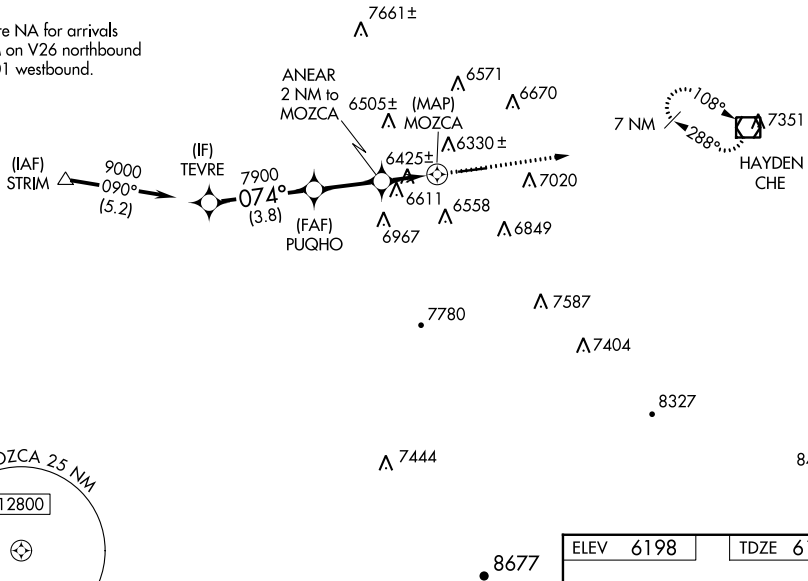
RNP APCH.

Circling NA for Cat D south of Rwy 7-25.
 Rwy 7 helicopter visibility reduction below 3/4 SM NA.
 Circling Rwy 25 NA at night.

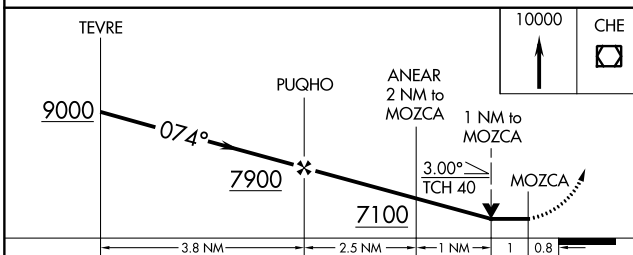
MISSED APPROACH: Climb to 10000 direct
 CHE VOR/DME and hold, continue climb-
 in-hold to 10000.

ASOS 135.425	DENVER CENTER 120.475 235.975	UNICOM 122.8 (CTAF)
------------------------	---	-------------------------------

Procedure NA for arrivals at STRIM on V26 northbound and V101 westbound.



ELEV 6198	TDZE 6193
-----------	-----------



CATEGORY	A	B	C	D
LP MDA	6800-1	607 (700-1)	6800-1 ³ / ₄	607 (700-1 ³ / ₄)
LNNAV MDA	6880-1	687 (700-1)	6880-2	687 (700-2)
CIRCLING	7180-1 ¹ / ₄ 982 (1000-1 ¹ / ₄)	7320-1 ¹ / ₂ 1122 (1200-1 ¹ / ₂)	7720-3	1522 (1600-3)

10000 CHE
 5606 X 100
 074°
 REIL Rwys 7 and 25
 MRL Rwy 7-25

CRAIG, COLORADO
Orig 24MAY18

40°30'N-107°31'W

CRAIG-MOFFAT (CAG) RNAV (GPS) RWY 7

SW-1, 11 JUL 2024 to 08 AUG 2024

SW-1, 11 JUL 2024 to 08 AUG 2024