

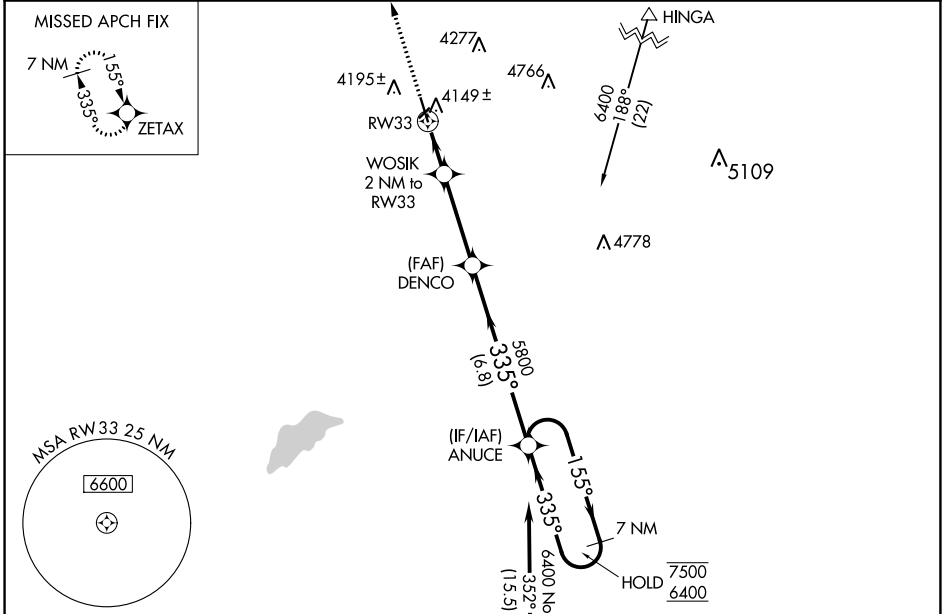
WAAS CH <b>65730</b> <b>W33A</b>	APP CRS <b>335°</b>	Rwy Idg TDZE Apt Elev	<b>5201</b> <b>4028</b> <b>4038</b>
--	------------------------	-----------------------------	---

# RNAV (GPS) RWY 33

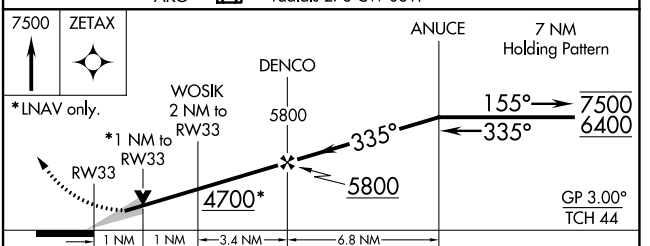
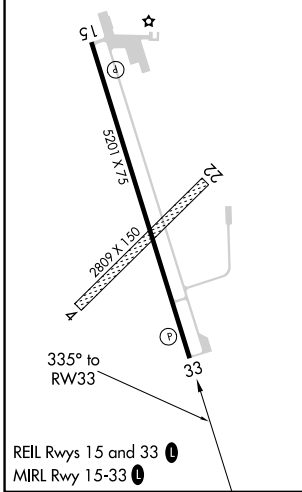
STERLING MUNI (STK)

RNP APCH.	MISSED APPROACH: Climb to 7500 direct ZETAX and hold, continue climb-in-hold to 7500.
-----------	---

AWOS-3 <b>118,525</b>	DENVER CENTER <b>118,475 225.4</b>	UNICOM <b>122.8 (CTAF) 0</b>
--------------------------	---------------------------------------	---------------------------------



ELEV <b>4038</b>	TDZE <b>4028</b>
------------------	------------------



CATEGORY	A	B	C	D
LPV DA		4278- <sup>3</sup> / <sub>4</sub>	250 (300- <sup>3</sup> / <sub>4</sub> )	
LNAV/VNAV DA		4332-1	304 (300-1)	
LNAV MDA		4400-1	372 (400-1)	
<b>C</b> CIRCLING	4520-1 482 (500-1)	4580-1 542 (600-1)	4620-1½ 582 (600-1½)	4720-2½ 682 (700-2½)

SW-1, 11 JUL 2024 to 08 AUG 2024