

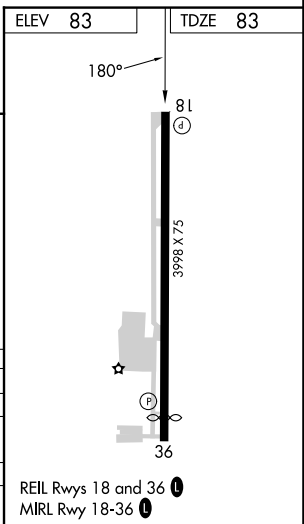
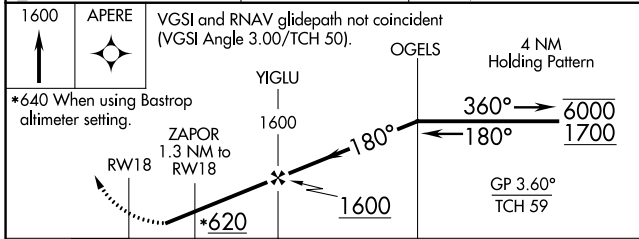
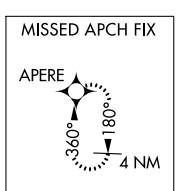
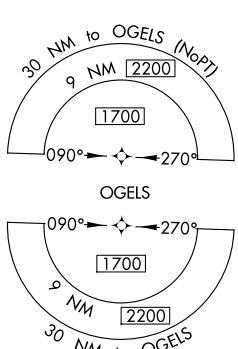
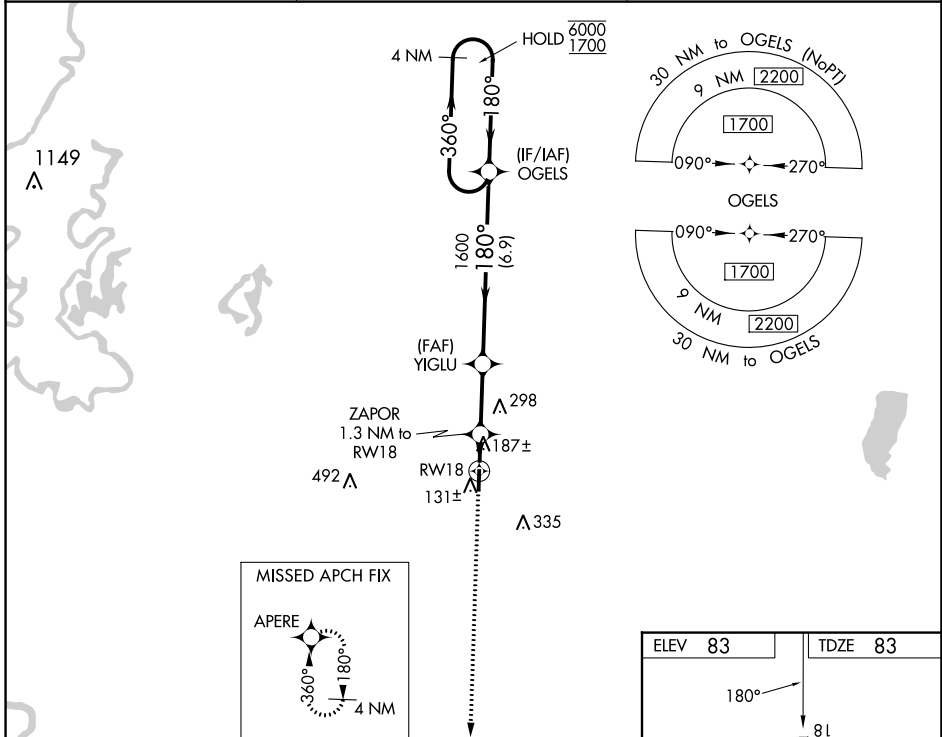
WAAS CH <b>58011</b> <b>W18A</b>	APP CRS <b>180°</b>	Rwy ldg <b>3998</b> TDZE <b>83</b> Apt Elev <b>83</b>
--	------------------------	---

# RNAV (GPS) RWY 18

JOHN H HOOKS JR MEML (M79)

RNP APCH - GPS.	Rwy 18 helicopter visibility reduction below 1 SM NA. Straight-in and Circling Rwy 18 NA at night. Use Monroe altimeter setting, when not received, use Bastrop altimeter setting and increase all DA/MDA 20 feet; increase LPV all Cats visibility 1/8 SM. Baro-VNAV NA.	MISSED APPROACH: Climb to 1600 direct APERE and hold.
-----------------	---	--

MLU ASOS <b>125.05</b>	MONROE APP CON * <b>126.9</b>	UNICOM <b>122.8</b> (CTAF) <b>0</b>
---------------------------	----------------------------------	--



CATEGORY	A	B	C	D
LPV DA	448-1	365 (400-1)	NA	NA
LNAV/VNAV DA	559-1 3/8	476 (500-1 3/8)	NA	NA
LNAV MDA	480-1	397 (400-1)	NA	NA
CIRCLING	600-1	517 (600-1)	NA	NA

SC-4, 11 JUL 2024 to 08 AUG 2024

SC-4, 11 JUL 2024 to 08 AUG 2024