

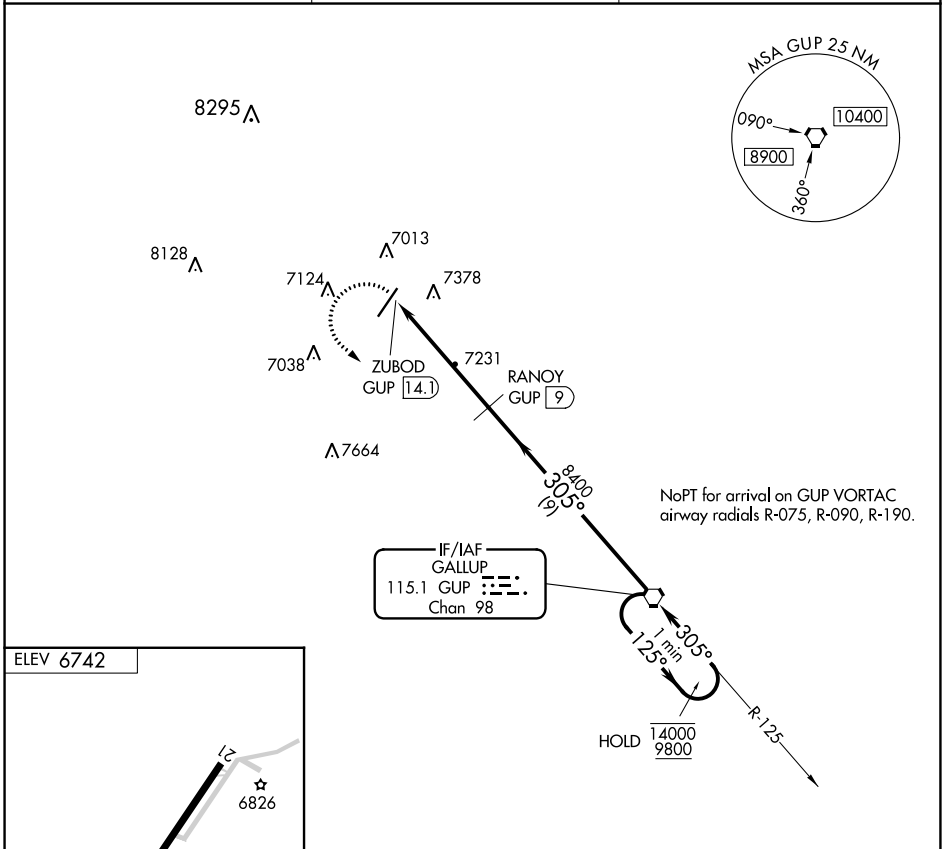
VORTAC GUP 115.1 Chan 98	APP CRS 305°	Rwy ldg TDZE Apt Elev 6742	N/A N/A
--	------------------------	--	--------------------------

VOR-A

WINDOW ROCK (R,Q,E)

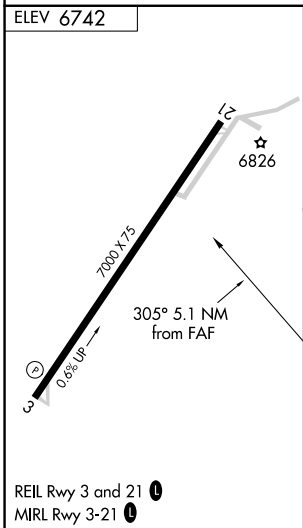
DME required.	MISSED APPROACH: Climbing left turn to 9800 direct GUP VORTAC and hold.
Circling Rwy 21 NA at night.	

ASOS 118.325	ALBUQUERQUE CENTER 124.325 288.25	UNICOM 122.8 (CTAF) 0
------------------------	---	---------------------------------



NoPT for arrival on GUP VORTAC airway radials R-075, R-090, R-190.

IF/IAF
GALLUP
115.1 GUP
Chan 98



9800	GUP	GUP VORTAC		One Minute Holding Pattern
		RANJOY GUP [9]		
ZUBOD GUP [14.1]		8400	125° → 14000	← 305° 9800
		5.1 NM	9 NM	
CATEGORY	A	B	C	D
CIRCLING	7740-1¼ 998 (1000-1¼)	7740-1½ 998 (1000-1½)	7780-3 1038 (1100-3)	8080-3 1338 (1400-3)

SW-4, 11 JUL 2024 to 08 AUG 2024

SW-4, 11 JUL 2024 to 08 AUG 2024