

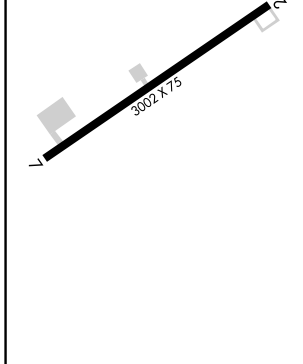
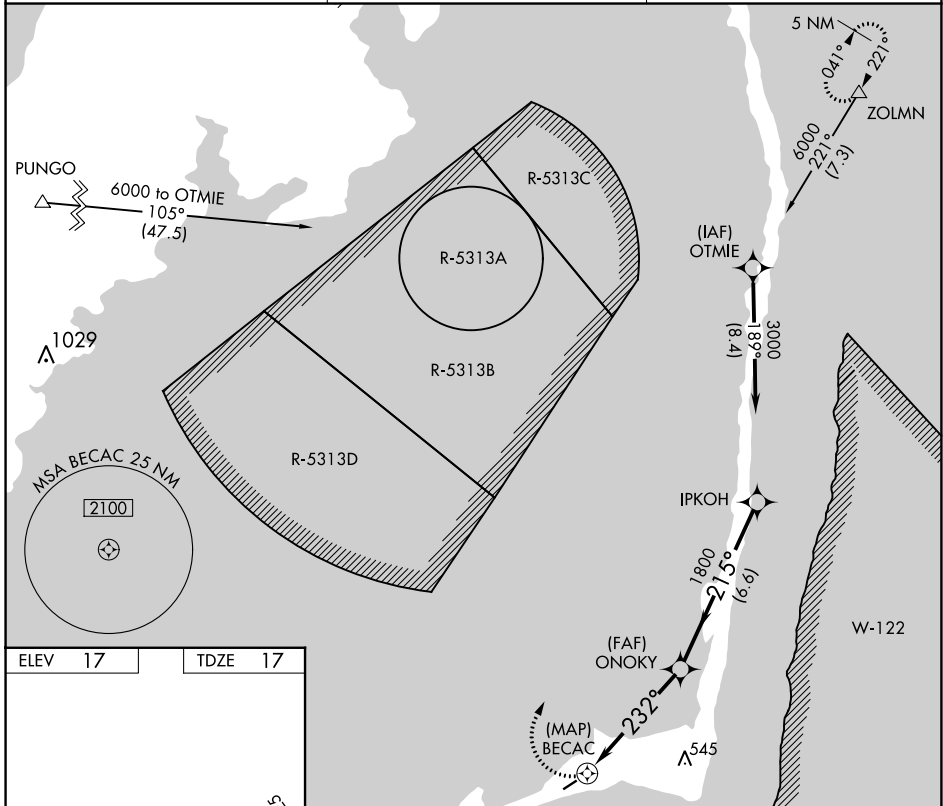
APP CRS 232°	Rwy Idg 3002
	TDZE 17
	Apt Elev 17

RNAV (GPS) RWY 25

BILLY MITCHELL (HSE)

NA Procedure NA at night. GPS or RNP-0.3 required. DME/DME RNP-0.3 NA.	MISSED APPROACH: Climbing right turn to 6000 via course 032° to ZOLMN WP and hold.
---	---

ASOS 118.375	CHERRY POINT APP CON 119.75 360.775	CTAF 122.9
------------------------	---	----------------------



	ZOLMN △ crs 032°		IPKOH 3000	
	BECAC		ONOKY	
	232°		215°	
	3.00°		1800	
	TCH 40		Procedure Turn NA	
	0.5		6.6 NM	
CATEGORY	A	B	C	D
LNAV MDA	520-1	503 (600-1)	520-1½ 503 (600-1½)	NA
CIRCLING	560-1	543 (600-1)	560-1½ 543 (600-1½)	NA

SE-2, 11 JUL 2024 to 08 AUG 2024

SE-2, 11 JUL 2024 to 08 AUG 2024