

CLARION, IOWA

AL-6369 (FAA)

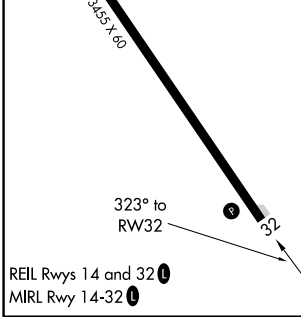
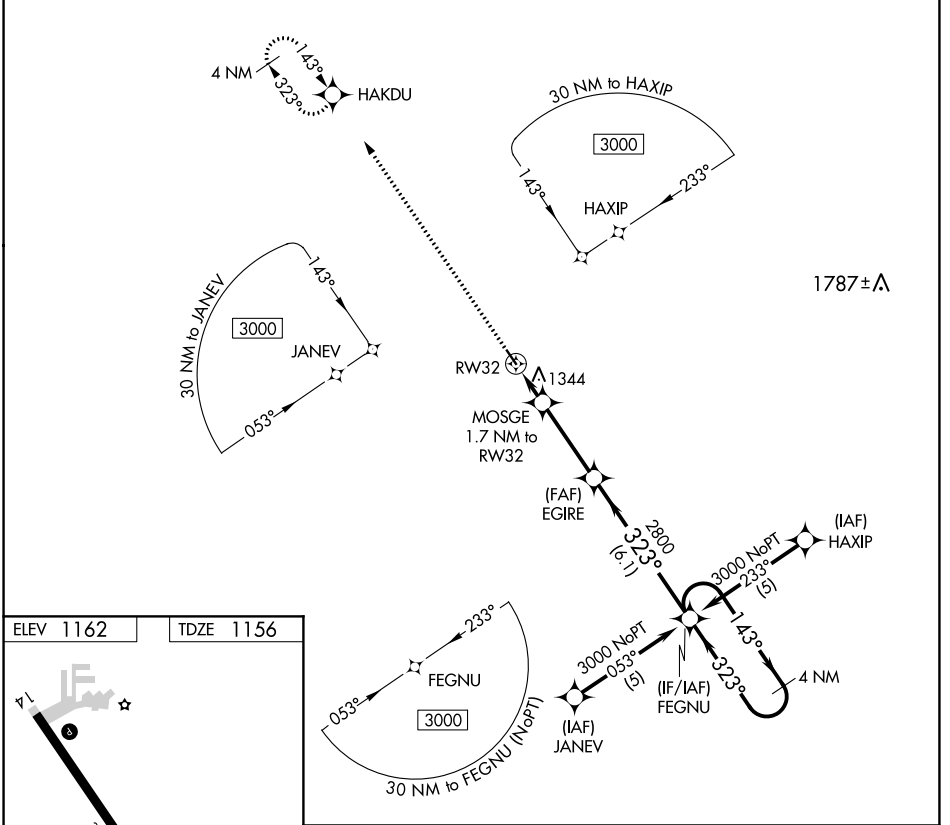
19311

APP CRS 323°	Rwy Idg 3455
	TDZE 1156
	Apt Elev 1162

RNAV (GPS) RWY 32

CLARION MUNI (CAV)

RNP APCH.		MISSED APPROACH: Climb to 3000 direct HAKDU and hold.
<p>▼ When local altimeter setting not received, use Fort Dodge altimeter setting and increase all MDA 60 feet. Rwy 32 helicopter visibility reduction below ¼ SM NA.</p>		
AWOS-3 126.575	MINNEAPOLIS CENTER 134.0 288.3	UNICOM 122.8 (CTAF) 0



3000 HAKDU	VGSi and descent angles not coincident (VGSi Angle 3.00/TCH 43).		FEGNU	4 NM Holding Pattern
↑	EGIRE	MOSGE 1.7 NM to RW32	EGIRE	3000
	RW32	1740	2800	143° →
	1.7	3.3 NM	6.1 NM	← 323°
CATEGORY	A	B	C	D
LNAV MDA	1600-1 444 (500-1)		NA	

NC-3, 11 JUL 2024 to 08 AUG 2024

NC-3, 11 JUL 2024 to 08 AUG 2024

CLARION, IOWA
Orig-A 07NOV19

42°44'N-93°46'W

CLARION MUNI (CAV) RNAV (GPS) RWY 32