

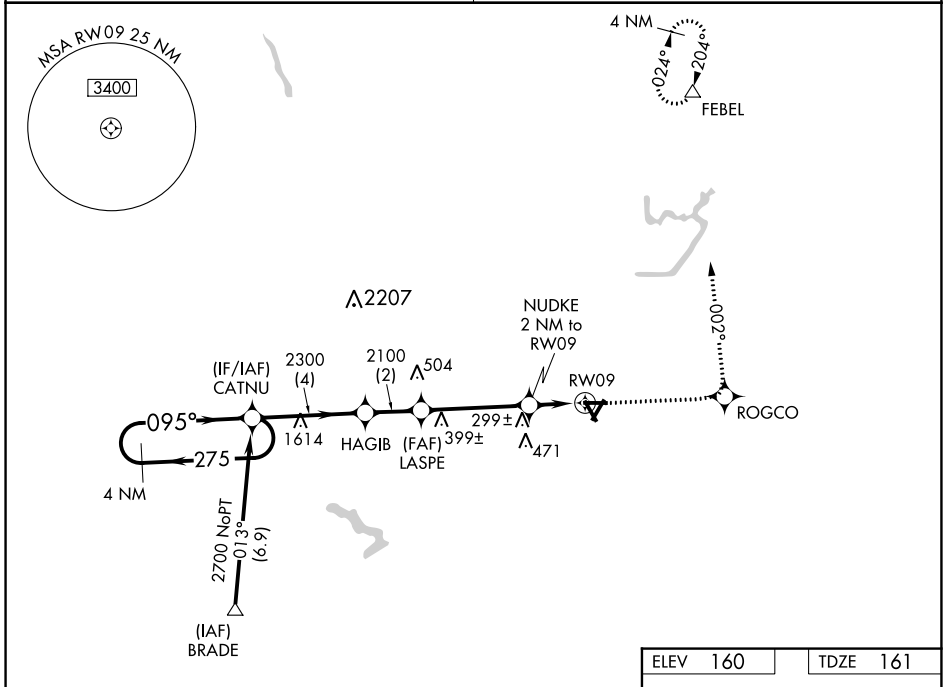
APP CRS	Rwy Idg	<b>4498</b>
<b>095°</b>	TDZE	<b>161</b>
	Apt Elev	<b>160</b>

# RNAV (GPS) RWY 9

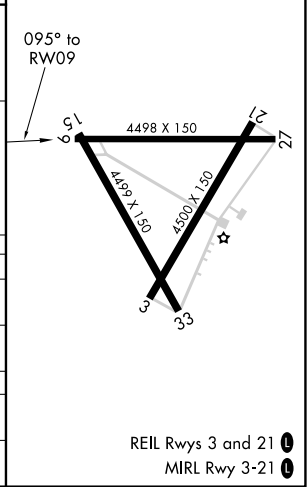
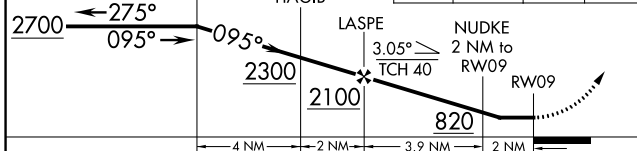
WILSON INDUSTRIAL AIR CENTER (W03)

<p><b>▼</b> DME/DME RNP-0.3 NA. Procedure NA at night. Visibility reduction by helicopters NA. Obtain local altimeter setting on CTAF; when not received use Rocky Mount altimeter setting.</p> <p><b>▲</b> NA</p>	<p>MISSED APPROACH: Climb to 2500 direct ROGCO then left turn via 002° track to FEBEL and hold.</p>
--	---

<p>WASHINGTON CENTER <b>123.85 279.65</b></p>	<p>UNICOM <b>123.0</b> (CTAF) <b>0</b></p>
---	--



ELEV	160	TDZE	161
------	-----	------	-----



CATEGORY	A	B	C	D
RNAV MDA	560-1	399 (400-1)		560-1¼ 399 (400-1¼)
CIRCLING	660-1	500 (500-1)	780-1¾ 620 (700-1¾)	780-2 620 (700-2)
ROCKY MOUNT ALTIMETER SETTING MINIMUMS				
RNAV MDA	580-1	419 (500-1)	580-1¼	419 (500-1¼)
CIRCLING	680-1	520 (600-1)	800-1¾ 640 (700-1¾)	800-2 640 (700-2)

REIL Rwy 3 and 21 **0**  
MIRL Rwy 3-21 **0**

SE-2, 11 JUL 2024 to 08 AUG 2024

SE-2, 11 JUL 2024 to 08 AUG 2024