

WAAS CH 50327 W27A	APP CRS 268°	Rwy Idg TDZE Apt Elev	4095 1015 1021
----------------------------------------	------------------------	-----------------------------	-------------------------------------------

RNAV (GPS) RWY 27

UNION COUNTY (MRT)

RNP APCH - GPS.

- ⚠ Circling NA to Rwys 8 and 26. Rwy 27 helicopter visibility reduction below 1 SM NA.
- ⚠ Straight-in Rwy 27 at night, Circling Rwy 27 at night, operational VGSI required, remain on or above VGSI glidepath until threshold.

MISSED APPROACH: Climb to 3000 direct KUTAW and hold.

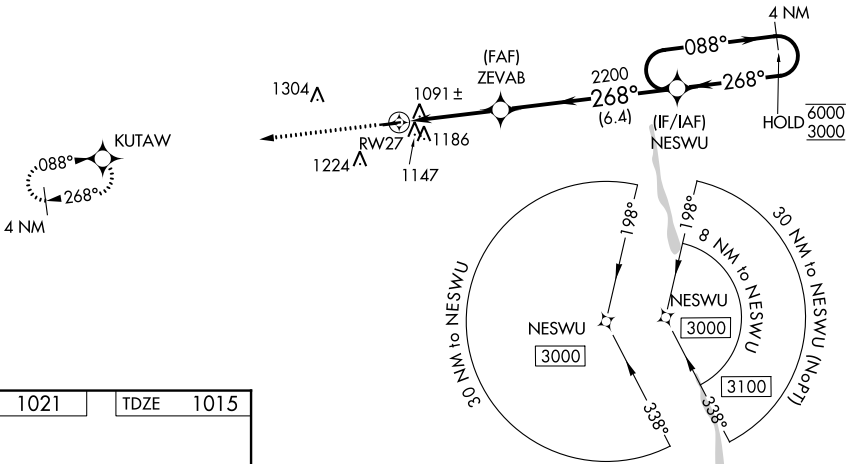
AWOS-3
119.275

COLUMBUS APP CON
125.95 317.775

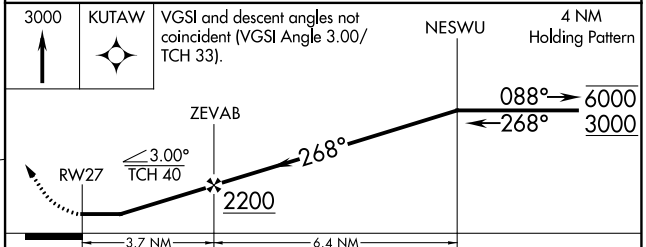
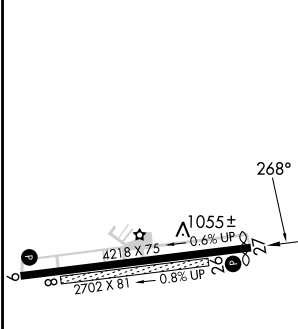
UNICOM
122.8 (CTAF)

△ 1740

△ 1457



ELEV 1021	TDZE 1015
-----------	-----------



CATEGORY	A	B	C	D
LP MDA	1360-1		345 (400-1)	
LNAV MDA	1400-1	385 (400-1)	1400-1½	385 (400-1½)
CIRCLING	1520-1 499 (500-1)	1540-1 519 (600-1)	1620-1½ 599 (600-1½)	1620-2 599 (600-2)

MIRL Rwy 9-27
REIL Rwys 9 and 27

EC-2, 11 JUL 2024 to 08 AUG 2024

EC-2, 11 JUL 2024 to 08 AUG 2024