

WAAS CH 72827 W09A	APP CRS 088°	Rwy Idg TDZE Apt Elev	4218 1021 1021
--	------------------------	-----------------------------	---

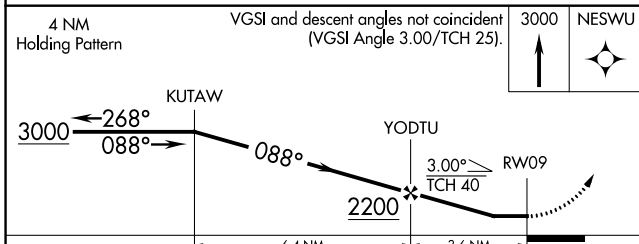
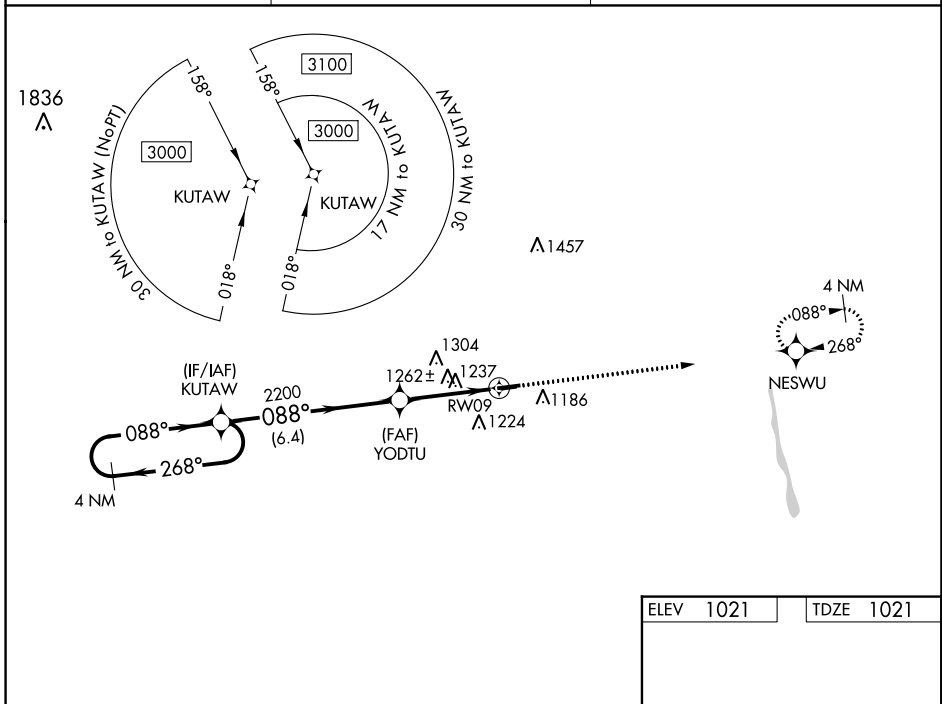
RNAV (GPS) RWY 9
UNION COUNTY (MRT)

RNP APCH - GPS.

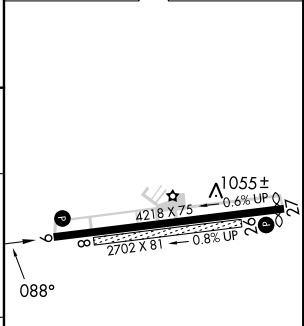
▼ Rwy 9 helicopter visibility reduction below 3/4 SM NA. When local altimeter setting not received, use John Glenn Columbus Intl altimeter setting and increase all MDA's 100 feet; increase LP visibility Cat C/D 1/4 SM, LNAV visibility Cat C/D 3/8 SM, and Circling visibility Cat C/D 1/2 SM. When Circling to Rwy 27 at night, operational VGSI required, remain on or above VGSI glidepath until threshold.

MISSED APPROACH: Climb to 3000 direct NESWU and hold.

AWOS-3 119.275	COLUMBUS APP CON 125.95 317.775	UNICOM 122.8 (CTAF)
--------------------------	---	-------------------------------



ELEV 1021	TDZE 1021
-----------	-----------



CATEGORY	A	B	C	D
LP MDA	1500-1	479 (500-1)	1500-1 3/8	479 (500-1 3/8)
LNAV MDA	1520-1	499 (500-1)	1520-1 3/8	499 (500-1 3/8)
CIRCLING	1520-1 499 (500-1)	1540-1 519 (600-1)	1620-1 1/2 599 (600-1 1/2)	1620-2 599 (600-2)

MIRL Rwy 9-27
REIL Rwys 9 and 27