

WAAS CH <b>72630</b> <b>W11A</b>	APP CRS <b>111°</b>	Rwy Idg TDZE Apt Elev	<b>5001</b> <b>1152</b> <b>1171</b>
--	------------------------	-----------------------------	---

# RNAV (GPS) RWY 11

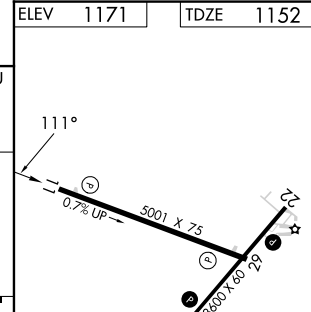
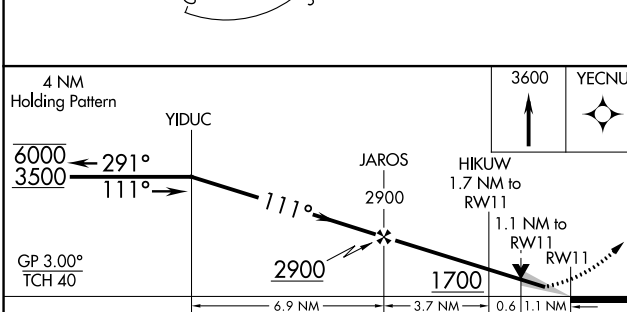
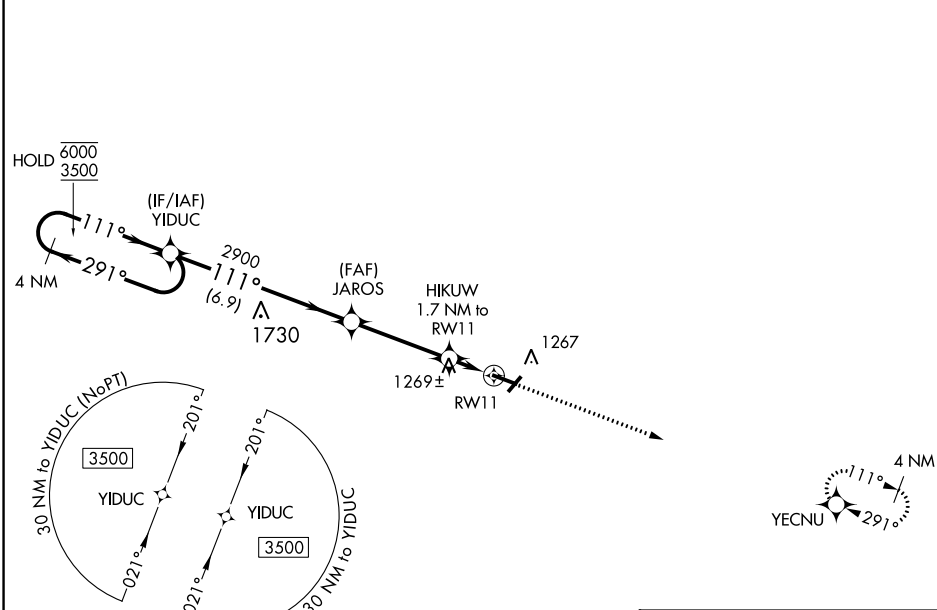
IOWA COUNTY (MRJ)

RNP APCH - GPS.

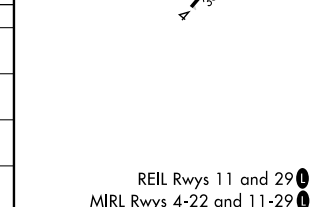
**⚠** Baro-VNAV and VDP NA when using Platteville altimeter setting. For uncompensated Baro-VNAV systems, LNAV/VNAV NA below -17°C or above 54°C. When local altimeter setting not received, use Platteville altimeter setting and increase LPV and LNAV/VNAV DA to 1457 feet; increase all MDAs 60 feet and LNAV visibility Cat C ¼ SM.

**MISSED APPROACH:**  
Climb to 3600 direct YECNU and hold.

AWOS-3 <b>118.525</b>	CHICAGO CENTER <b>133.95 281.4</b>	UNICOM <b>122.8 (CTAF) 0</b>
--------------------------	---------------------------------------	---------------------------------



CATEGORY	A	B	C	D
LPV DA	1402-1	250 (300-1)		NA
LNAV/VNAV DA	1402-1	250 (300-1)		NA
LNAV MDA	1520-1	368 (400-1)		NA
CIRCLING	1620-1 449 (500-1)	1640-1 469 (500-1)	1640-1½ 469 (500-1½)	NA



EC-3, 11 JUL 2024 to 08 AUG 2024

EC-3, 11 JUL 2024 to 08 AUG 2024

REIL Rwy 11 and 29  
MIRL Rwy 4-22 and 11-29