

WAAS CH 82330 W29A	APP CRS 291°	Rwy Idg TDZE Apt Elev	5001 1164 1171
--	------------------------	-----------------------------	---

RNAV (GPS) RWY 29

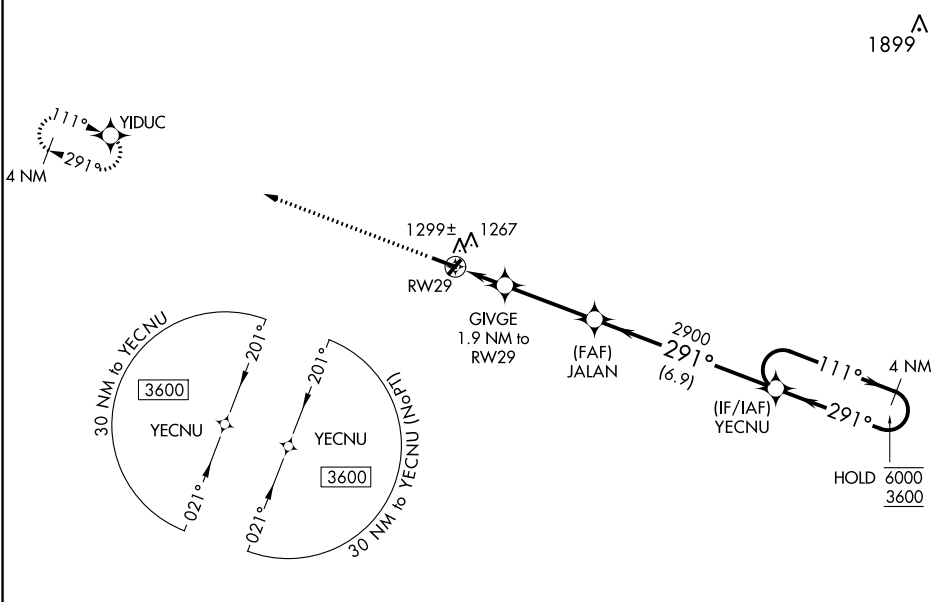
IOWA COUNTY (MR.J)

RNP APCH - GPS.

⚠ Baro-VNAV and VDP NA when using Platteville altimeter setting. For uncompensated Baro-VNAV systems, LNAV/VNAV NA below -17°C or above 54°C. When local altimeter setting not received, use Platteville altimeter setting and increase LPV DA to 1469 feet; increase LNAV/VNAV DA to 1524 feet; increase all MDAs 60 feet and LNAV visibility Cat C ¼ SM.

MISSED APPROACH:
Climb to 3500 direct YIDUC and hold.

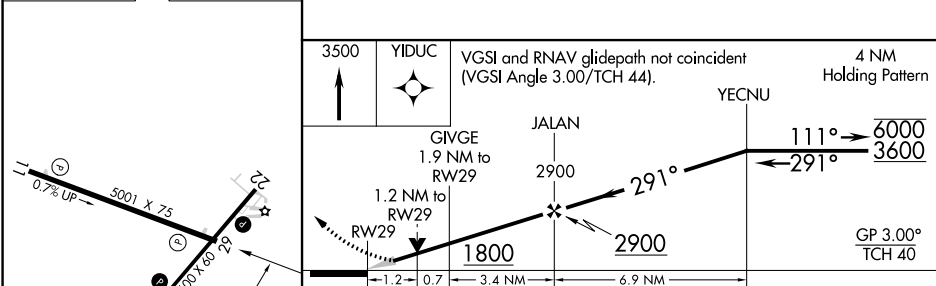
AWOS-3 118.525	CHICAGO CENTER 133.95 281.4	UNICOM 122.8 (CTAF) 0
--------------------------	---------------------------------------	---------------------------------



EC-3, 11 JUL 2024 to 08 AUG 2024

EC-3, 11 JUL 2024 to 08 AUG 2024

ELEV 1171	TDZE 1164
-----------	-----------



3500	YIDUC	VGSI and RNAV glidepath not coincident (VGSI Angle 3.00/TCH 44).	4 NM Holding Pattern
		JALAN 2900	YECNU
		GIVGE 1.9 NM to RW29	111° → 6000 ← 291° 3600
		1.2 NM to RW29	GP 3.00° TCH 40
		1.2 0.7 3.4 NM 6.9 NM	

CATEGORY	A	B	C	D
LPV DA		1414-1	250 (300-1)	NA
LNAV/VNAV DA		1469-1	305 (300-1)	NA
LNAV MDA	1580-1	416 (500-1)	1580-1 1/8 416 (500-1 1/8)	NA
CIRCLING	1620-1 449 (500-1)	1640-1 469 (500-1)	1640-1 1/2 469 (500-1 1/2)	NA