

WAAS CH <b>69431</b> <b>W05A</b>	APP CRS <b>049°</b>	Rwy Idg TDZE <b>166</b> Apt Elev <b>166</b>	<b>5254</b>
--	------------------------	---	-------------

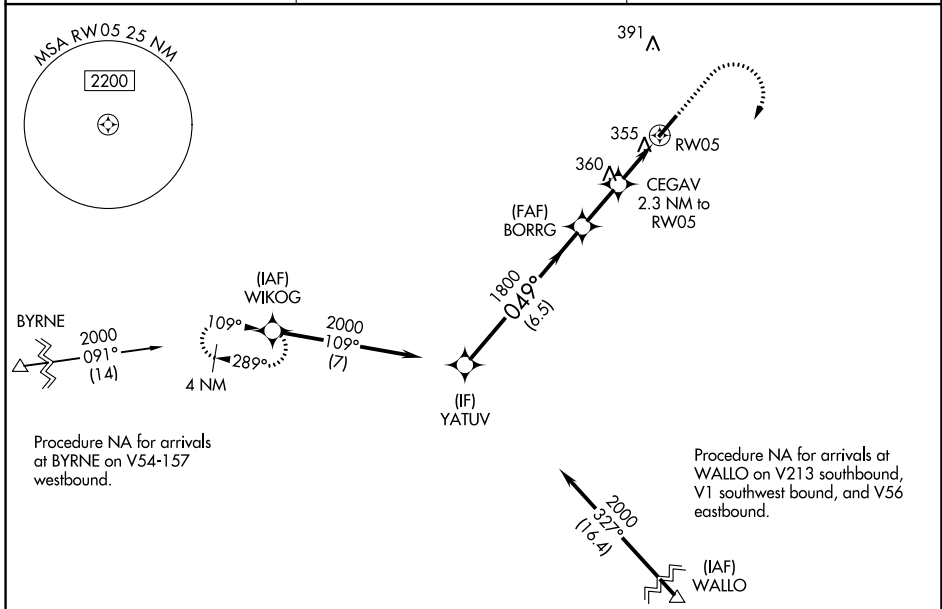
# RNAV (GPS) RWY 5

MOUNT OLIVE MUNI (W40)

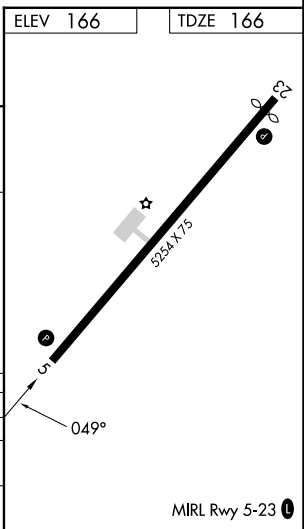
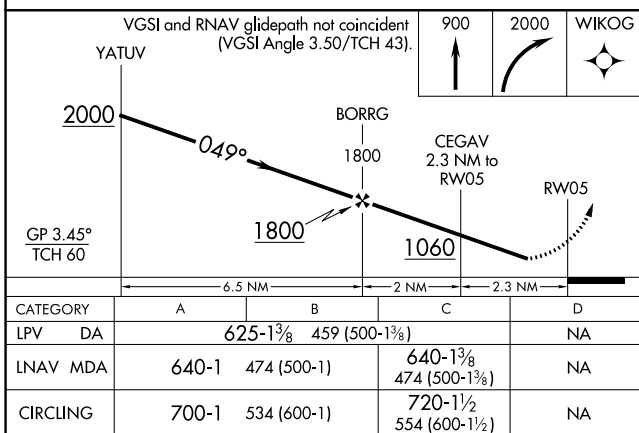
RNP APCH - GPS.

<p><b>▽</b> <b>▲</b></p> <p>Rwy 5 helicopter visibility reduction below 3/4 SM NA. When local altimeter setting not received, use Goldsboro altimeter setting.</p>	<p>MISSED APPROACH: Climb to 900 then climbing right turn to 2000 direct WIKOG and hold.</p>
--	--

AWOS-3P <b>120.075</b>	SEYMOUR JOHNSON APP CON* <b>119.7 273.6</b>	UNICOM <b>122.8 (CTAF) 0</b>
---------------------------	--	---------------------------------



ELEV 166	TDZE 166
----------	----------



SE-2, 11 JUL 2024 to 08 AUG 2024

SE-2, 11 JUL 2024 to 08 AUG 2024