

NDB MTH <b>260</b>	APP CRS <b>075°</b>	Rwy ldg TDZE Apt Elev	<b>N/A</b> <b>N/A</b> <b>5</b>
-----------------------	------------------------	--------------------------	--------------------------------------

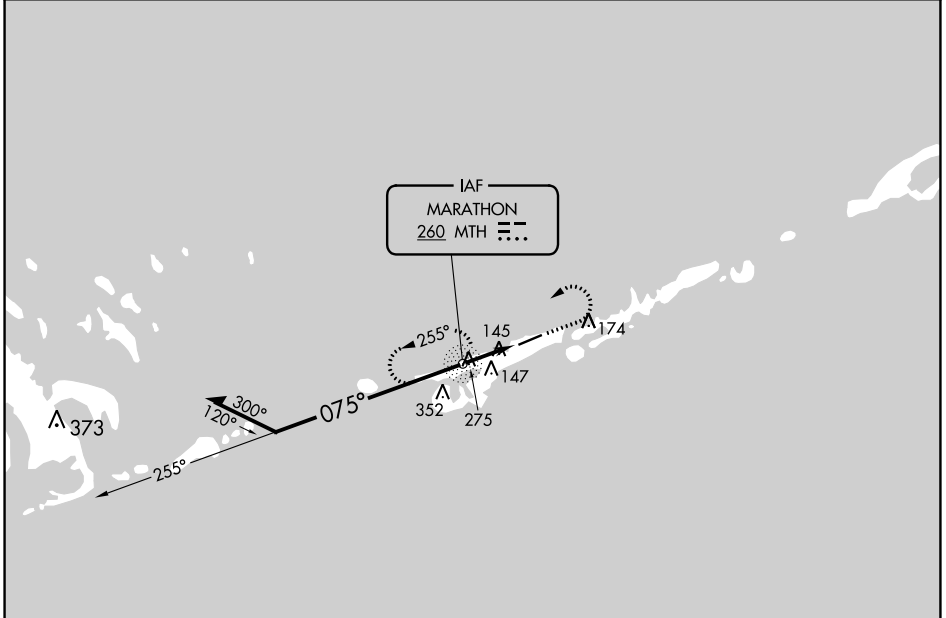
# NDB-A

## THE FLORIDA KEYS MARATHON INTL (MTH)

**▼** Helicopter visibility reduction below  $\frac{3}{4}$  SM NA.  
**▲** When local altimeter setting not received, use Key West Intl altimeter setting and increase all MDAs 100 feet, increase Cat C visibility  $\frac{1}{4}$  SM, and Cat D visibility  $\frac{1}{2}$  SM.

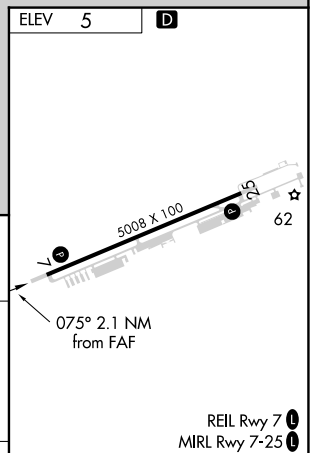
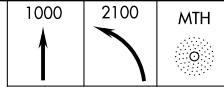
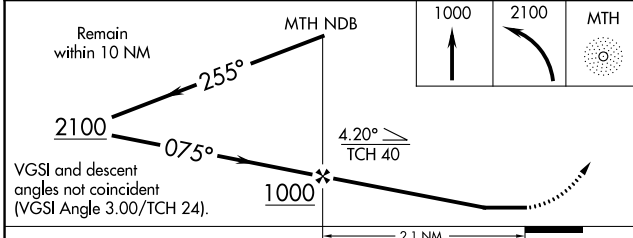
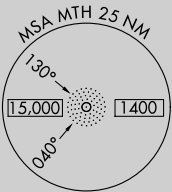
MISSED APPROACH: Climb to 1000 then climbing left turn to 2100 direct MTH NDB and hold.

ASOS <b>135.525</b>	MIAMI CENTER <b>133.5 306.9</b>	UNICOM <b>122.975 (CTAF) 1</b>
------------------------	------------------------------------	-----------------------------------



SE-3, 11 JUL 2024 to 08 AUG 2024

SE-3, 11 JUL 2024 to 08 AUG 2024



CATEGORY	A	B	C	D	FAF to MAP 2.1 NM					
	460-1 455 (600-1)	480-1 475 (500-1)	620-1 $\frac{1}{4}$ 615 (700-1 $\frac{1}{4}$ )	660-2 655 (700-2)	Knots	60	90	120	150	180
CIRCLING					Min:Sec	2:06	1:24	1:03	0:50	0:42

# NDB-A