

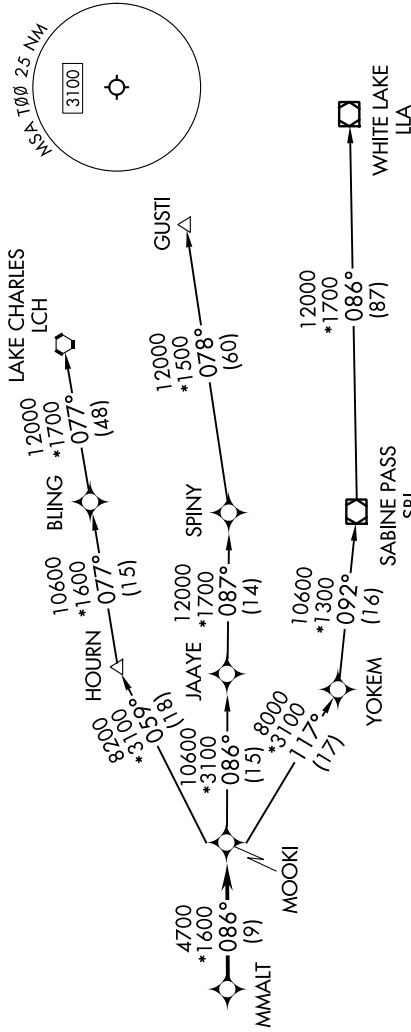
MMALT SEVEN DEPARTURE (RNAV)

SC-5, 11 JUL 2024 to 08 AUG 2024

HOUSTON DEP CON
134.45 284.0
CTAF
122.9

RNAV 1 - DME/DME/IRU or GPS.
RADAR required.

TOP ALTITUDE:
ASSIGNED BY ATC



NOTE: GUSTI and LCH Transitions ATC assigned only for aircraft departing AXH, EFD, GLS, HPY, IWS, LBX, LVJ, SGR, TIME, T00, T41 and 54T.

DEPARTURE ROUTE DESCRIPTION

TAKEOFF RUNWAY 12: Climb on heading 124° to 540, for RADAR vectors to MMALT, thence . . .
 TAKEOFF RUNWAY 30: Climb on heading 304° to 540, for RADAR vectors to MMALT, thence . . .
 . . . on track 086° to MOOKI, then on (transition). Maintain ATC assigned altitude.
 Expect filed altitude 10 minutes after departure.

GUSTI TRANSITION (MMALT7.GUSTI)
 LAKE CHARLES TRANSITION (MMALT7.LCH)
 WHITE LAKE TRANSITION (MMALT7.LLA)

TAKEOFF MINIMUMS
 Rwy 17, 35: NA-Environmental.
 Rwy 12, 30: Standard with minimum
 climb of 500'/NM to 540.

NOTE: Chart not to scale.

MMALT SEVEN DEPARTURE (RNAV)

SC-5, 11 JUL 2024 to 08 AUG 2024