

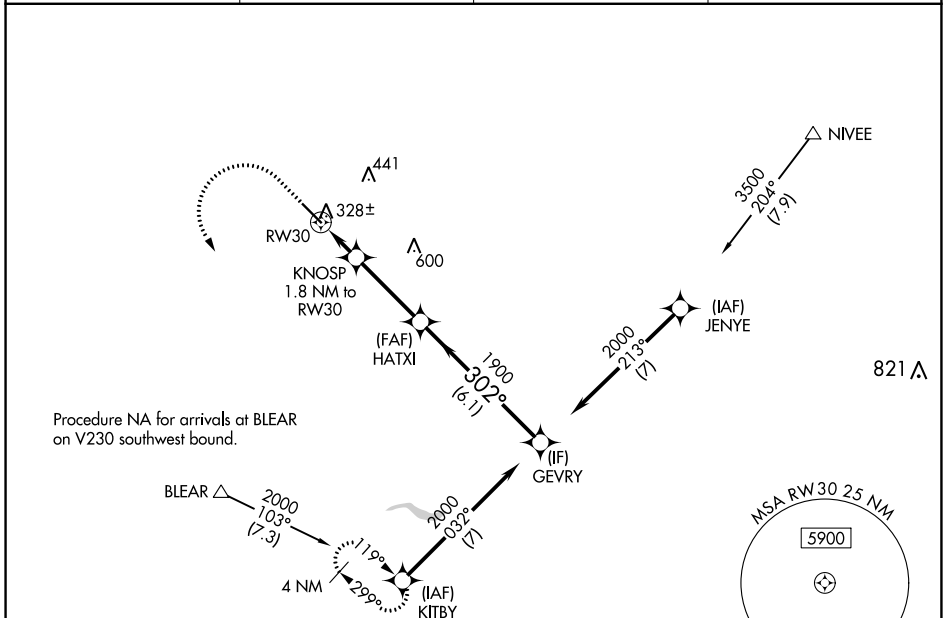
WAAS CH 90209 W30A	APP CRS 302°	Rwy Idg TDZE 255 Apt Elev 255	5545 255 255
--	------------------------	---	---

RNAV (GPS) RWY 30

MADERA MUNI (M.A.E.)

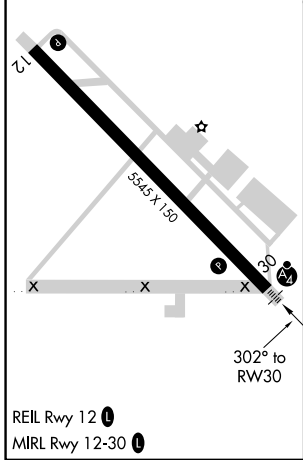
RNP APCH - GPS.	MALSF 	MISSED APPROACH: Climb to 800 then climbing left turn to 2000 to KITBY and hold.
For uncompensated Baro-VNAV systems, LNAV/VNAV NA below -2°C or above 54°C. Inop table does not apply to LPV and LNAV/VNAV Cat A/B/C.		

ASOS 134.725	FRESNO APP CON 119.45	CINC DEL 119.45	UNICOM 122.8 (CTAF) 0
------------------------	---------------------------------	---------------------------	---------------------------------



Procedure NA for arrivals at BLEAR on V230 southwest bound.

ELEV 255	TDZE 255
----------	----------



REIL Rwy 12 0
MIRL Rwy 12-30 0

800	2000	KITBY	VGSI and RNAV glidepath not coincident (VGSI Angle 3.00/TCH 34).		
		KNOSP 1.8 NM to RW30	HATXI 1900	GEVRY 2000	
		1.1 NM to RW30	1900	2000	
		860	1900	2000	
		1.1 NM	0.7 NM	3.3 NM	6.1 NM
		1.1 NM	0.7 NM	3.3 NM	6.1 NM
CATEGORY	A	B	C	D	
LPV DA	505-3/4	250 (300-3/4)		NA	
LNAV/VNAV DA	505-3/4	250 (300-3/4)		NA	
LNAV MDA	640-3/4	385 (400-3/4)	640-7/8 385 (400-7/8)	NA	
CIRCLING	680-1 425 (500-1)	720-1 465 (500-1)	760-1 1/2 505 (600-1 1/2)	NA	

GP 3.00°
TCH 35

SW-2, 11 JUL 2024 to 08 AUG 2024

SW-2, 11 JUL 2024 to 08 AUG 2024