

| | | |
|--|------------------------|---|
| WAAS CH 78131 W16A | APP CRS 164° | Rwy Idg TDZE 1206 Apt Elev 1206 |
|--|------------------------|---|

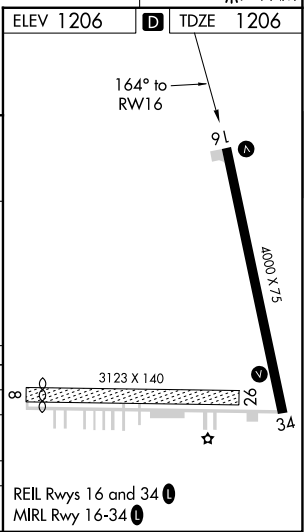
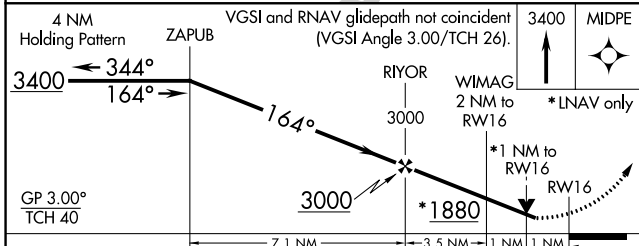
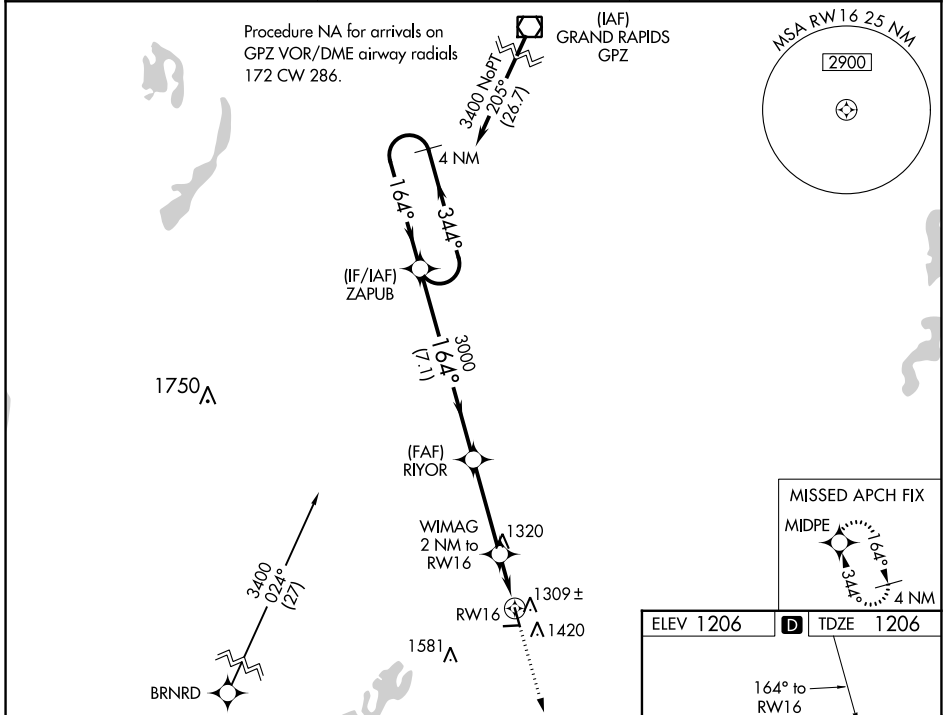
RNAV (GPS) RWY 16

AITKIN MUNI/STEVE KURTZ FLD (AIT)

⚠ For uncompensated Baro-VNAV systems, LNAV/VNAV NA below -17°C (2°F) or above 54°C (130°F).
⚠ Baro-VNAV and VDP NA when using Mc Gregor altimeter setting. DME/DME RNP-0.3 NA. When local altimeter setting not received; use Mc Gregor altimeter setting and increase all DA and MDA 40 feet; increase LPV all Cats visibilities ¼ SM, LNAV/VNAV all Cats and LNAV Cat C visibilities ½ SM. Circling NA to Rwys 8 and 26. Rwy 16 helicopter visibility reduction below ¾ SM NA.

MISSED APPROACH: Climb to 3400 direct MIDPE and hold.

| | | |
|--------------------------|---|----------------------------------|
| AWOS-3 118.675 | MINNEAPOLIS CENTER 118.05 239.0 | UNICOM 123.05 (CTAF) 0 |
|--------------------------|---|----------------------------------|



| CATEGORY | A | B | C | D |
|--------------|----------|---------------|-----------------------|----|
| LPV DA | 1518-1 | 312 (400-1) | | NA |
| LNAV/VNAV DA | 1607-1 ¾ | 401 (500-1 ¾) | | NA |
| LNAV MDA | 1560-1 | 354 (400-1) | | NA |
| CIRCLING | 1780-1 | 574 (600-1) | 1900-2 694 (700-2) | NA |

NC-1, 11 JUL 2024 to 08 AUG 2024

NC-1, 11 JUL 2024 to 08 AUG 2024