

WAAS CH 56236 W23A	APP CRS 234°	Rwy Idg TDZE Apt Elev	5500 270 270
--	------------------------	-----------------------------	---

RNAV (GPS) RWY 23

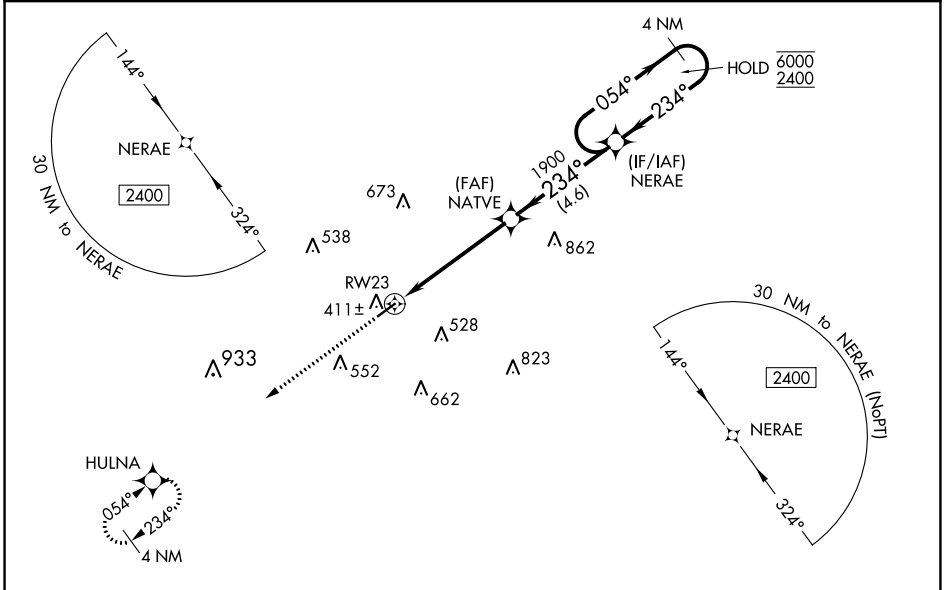
COLUMBIA/MARION COUNTY (ØRØ)

RNP APCH - GPS.

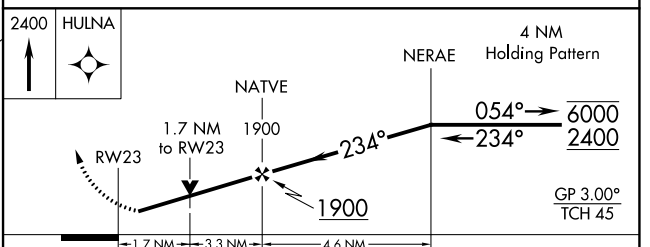
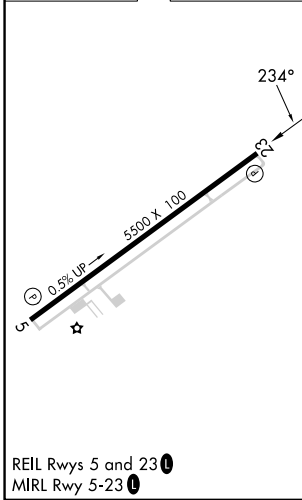
▽
▲ For uncompensated Baro-VNAV systems, LNAV/VNAV NA below -15°C or above 54°C.
Rwy 23 helicopter visibility reduction below ¾ SM NA.

MISSED APPROACH:
Climb to 2400 direct
HULNA and hold.

AWOS-3PT 120.675	HOUSTON CENTER 126.8 327.8	UNICOM 122.8 (CTAF) Ø
----------------------------	--------------------------------------	---------------------------------



ELEV 270	TDZE 270
----------	----------



CATEGORY	A	B	C	D
LPV DA		588-7/8	318 (400-7/8)	
LNAV/VNAV DA		761-13/8	491 (500-13/8)	
LNAV MDA	860-1	590 (600-1)	860-13/4	590 (600-13/4)
☑ CIRCLING	860-1	590 (600-1)	920-13/4 650 (700-13/4)	980-21/4 710 (800-21/4)

SC-4, 11 JUL 2024 to 08 AUG 2024

SC-4, 11 JUL 2024 to 08 AUG 2024