

WAAS CH <b>81836</b> <b>W05A</b>	APP CRS <b>054°</b>	Rwy Idg TDZE <b>255</b> Apt Elev <b>270</b>	<b>5500</b>
--	------------------------	---	-------------

# RNAV (GPS) RWY 5

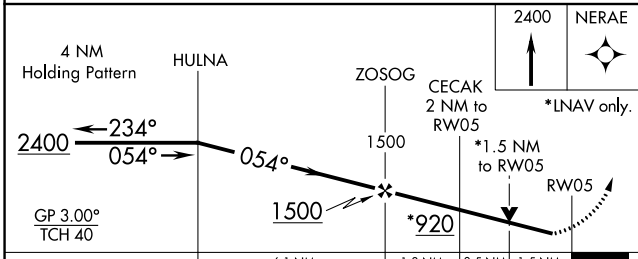
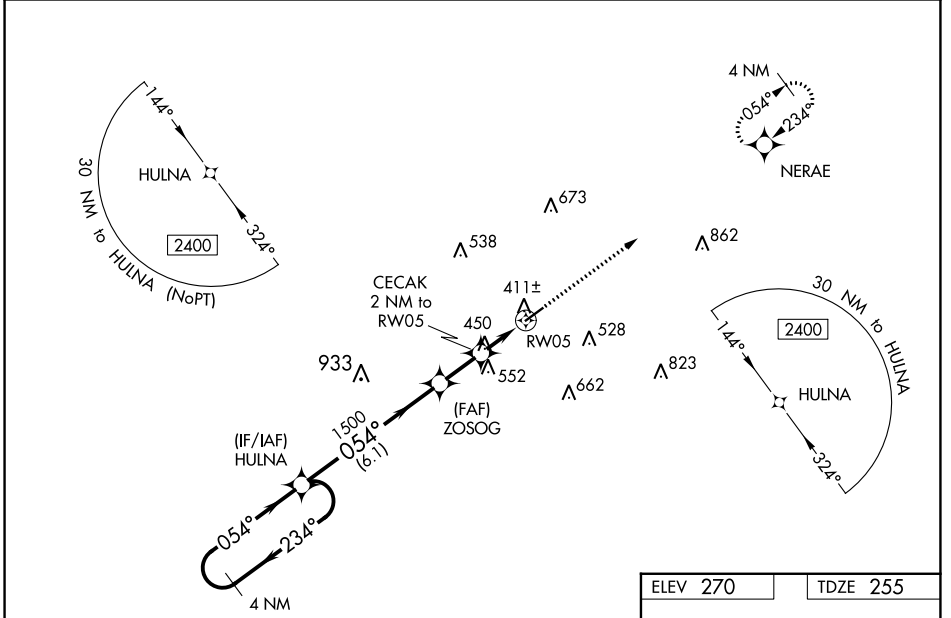
COLUMBIA/MARION COUNTY (ØRØ)

RNP APCH - GPS.

▼ **NA** For uncompensated Baro-VNAV systems, LNAV/VNAV NA below -15°C or above 54°C.  
 When local altimeter setting not received, use Hattiesburgh/Laurel Rgnl altimeter setting and increase all DA 66 feet and all MDA 80 feet; increase LPV all Cats visibility 1/8 mile and LNAV/VNAV all Cats and Circling Cat C visibilities 1/4 mile, increase Circling Cat D visibility 1/2 mile, increase LNAV Cat C and D visibility 3/8 mile. VDP and Baro-VNAV NA when using Hattiesburgh/Laurel Rgnl altimeter setting. Rwy 5 helicopter visibility reduction below 3/4 SM NA.

MISSED APPROACH:  
Climb to 2400 direct NERAE and hold.

AWOS-3PT <b>120.675</b>	HOUSTON CENTER <b>126.8 327.8</b>	UNICOM <b>122.8 (CTAF) Ø</b>
----------------------------	--------------------------------------	---------------------------------



ELEV 270	TDZE 255
REIL Rwy 5 and 23 Ø MRL Rwy 5-23 Ø	

CATEGORY	A	B	C	D
LPV DA	505-7/8		250 (300-7/8)	
LNAV/VNAV DA	743-1 5/8		488 (500-1 5/8)	
LNAV MDA	760-1	505 (500-1)	760-1 3/8	505 (500-1 3/8)
<b>C</b> CIRCLING	760-1 490 (500-1)	820-1 550 (600-1)	920-1 3/4 650 (700-1 3/4)	1000-2 1/4 730 (800-2 1/4)

SC-4, 11 JUL 2024 to 08 AUG 2024

SC-4, 11 JUL 2024 to 08 AUG 2024