

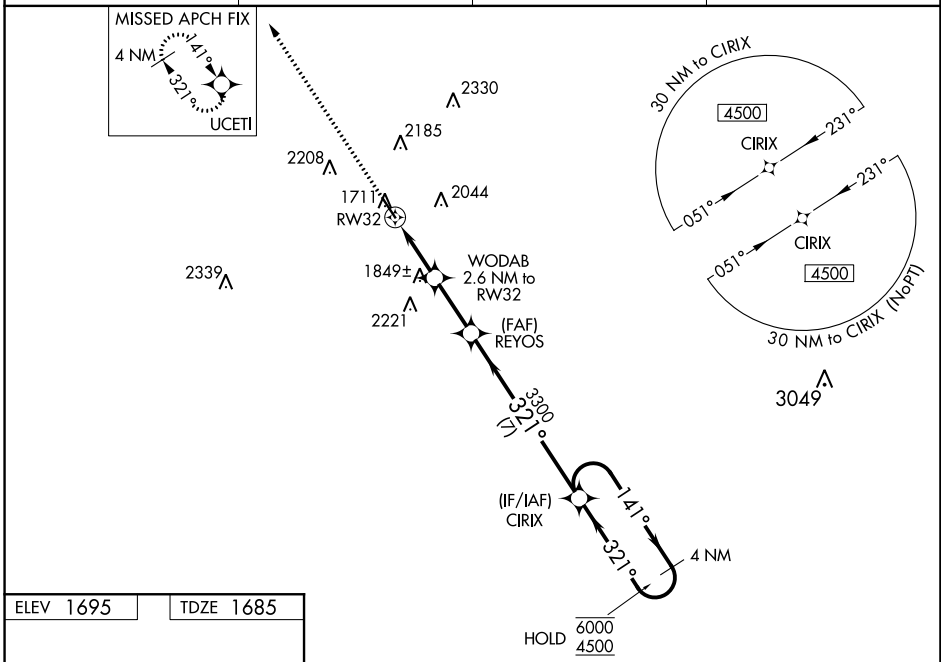
WAAS CH <b>81930</b> <b>W32A</b>	APP CRS <b>321°</b>	Rwy Idg TDZE Apt Elev	<b>5001</b> <b>1685</b> <b>1695</b>
--	------------------------	-----------------------------	---

# RNAV (GPS) RWY 32

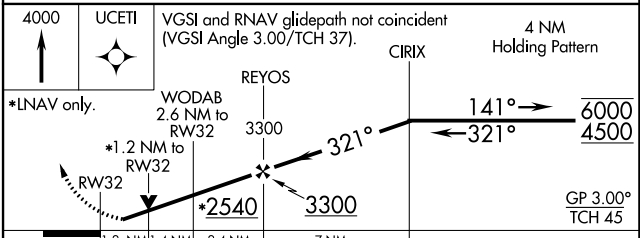
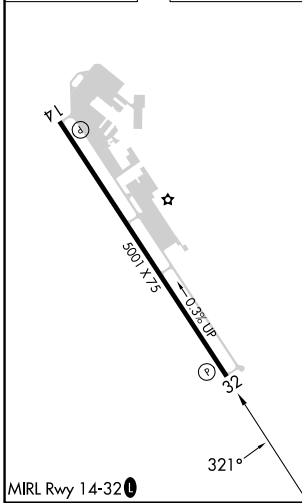
GILLESPIE COUNTY (T82)

RNP APCH.	MISSED APPROACH: Climb to 4000 direct UCETI and hold.
<p>▼ ▲ Rwy 32 helicopter visibility reduction below 3/4 SM NA. For uncompensated Baro-VNAV systems, LNAV/VNAV NA below -18°C or above 54°C.</p>	

AWOS-3 <b>120.0</b>	HOUSTON CENTER <b>134.2 307.3</b>	GCO <b>121.725</b>	UNICOM <b>122.7 (CTAF) 0</b>
------------------------	--------------------------------------	-----------------------	---------------------------------



ELEV 1695	TDZE 1685
-----------	-----------



CATEGORY	A	B	C	D
LPV DA	1935-1	250 (300-1)		NA
LNAV/VNAV DA	1967-1	282 (300-1)		NA
LNAV MDA	2100-1	415 (500-1)	2100-1¼ 415 (500-1¼)	NA
CIRCLING	2200-1 505 (600-1)	2480-1 785 (800-1)	2520-2½ 825 (900-2½)	NA

SC-3, 11 JUL 2024 to 08 AUG 2024

SC-3, 11 JUL 2024 to 08 AUG 2024