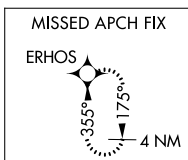
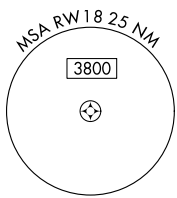
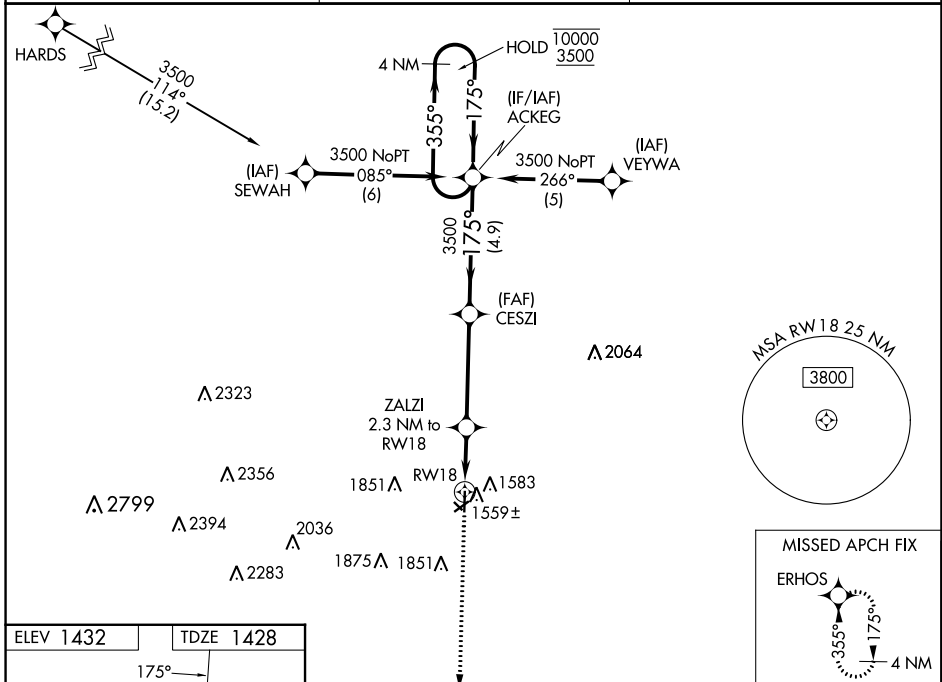


WAAS CH <b>77513</b> <b>W18A</b>	APP CRS <b>175°</b>	Rwy Idg TDZE Apt Elev	<b>4201</b> <b>1428</b> <b>1432</b>
--	------------------------	-----------------------------	---

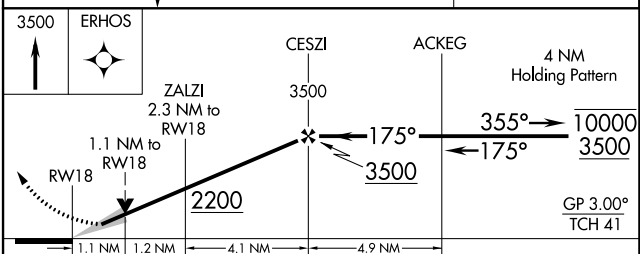
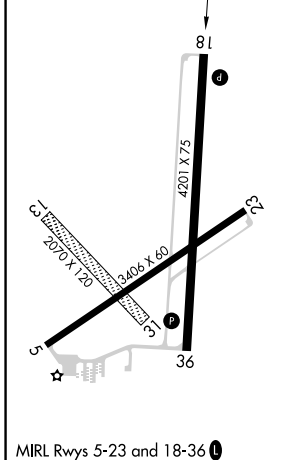
# RNAV (GPS) RWY 18

WAYNE MUNI/STAN MORRIS FLD (L,C,G)

RNP APCH - GPS.		MISSED APPROACH: Climb to 3500 direct ERHOS and hold.
<p>▼ Circling NA to Rwy's 13 and 31. For uncompensated Baro-VNAV systems, LNAV/VNAV NA below -17°C or above 54°C.</p> <p>▲</p>		
AWOS-3 <b>120.125</b>	SIOUX CITY APP CON ★ <b>124.6 307.0</b>	UNICOM <b>122.8 (CTAF) 0</b>



ELEV 1432	TDZE 1428
-----------	-----------



CATEGORY	A	B	C	D
LPV DA	1678-1	250 (300-1)		NA
LNAV/VNAV DA	1678-1	250 (300-1)		NA
LNAV MDA	1820-1	392 (400-1)		NA
CIRCLING	2000-1	568 (600-1)		NA

NC-2, 11 JUL 2024 to 08 AUG 2024

NC-2, 11 JUL 2024 to 08 AUG 2024