

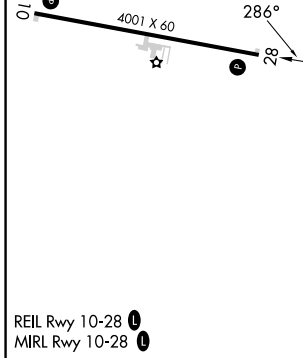
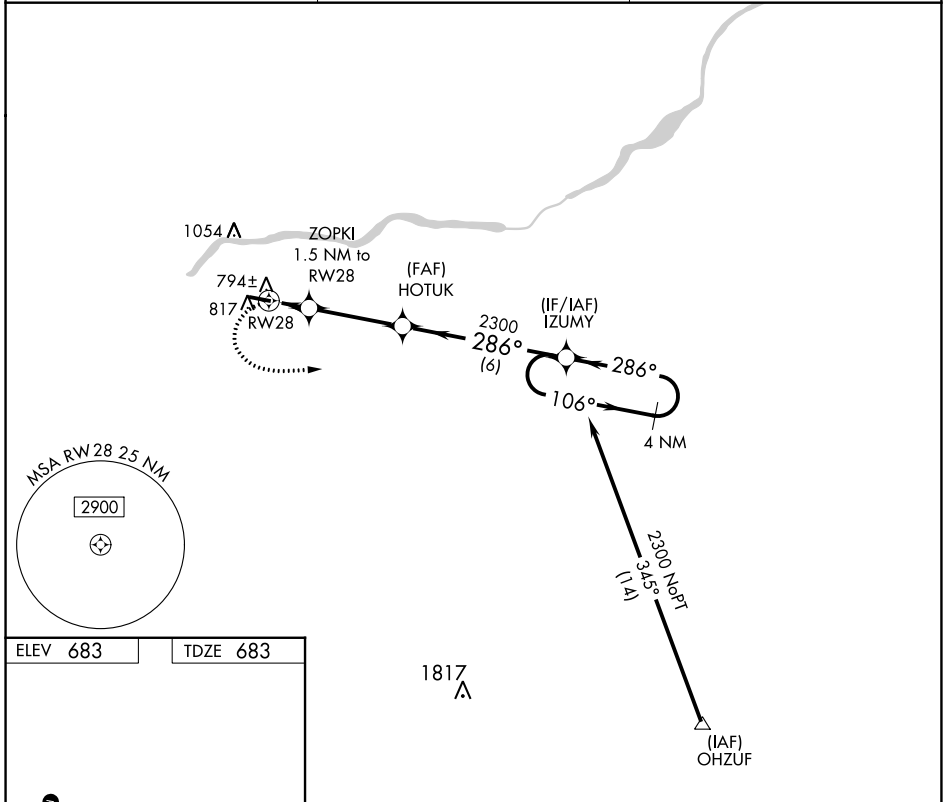
APP CRS	Rwy Idg	4001
286°	TDZE	683
	Apt Elev	683

RNAV (GPS) RWY 28

HENRY COUNTY (7W5)

RNP APCH.	<p>▼ Rwy 28 helicopter visibility reduction below ¾ SM NA. ▲ NA Circling Rwy 10 NA at night. Use Toledo Express altimeter setting. When not received, procedure NA.</p>	MISSED APPROACH: Climbing left turn to 2300 direct IZUMY and hold.
-----------	--	--

TOL ASOS 118.75 290.225	TOLEDO APP CON 134.35 307.0	UNICOM 123.0 (CTAF) 0
-----------------------------------	---------------------------------------	---------------------------------



ELEV 683	TDZE 683	<p>2300 IZUMY VGSi and descent angles not coincident (VGSi Angle 3.00/TCH 25).</p> <p>4 NM Holding Pattern</p>		
<p>HOTUK IZUMY</p> <p>ZOPKI 1.5 NM to RWY 28</p> <p>1200</p> <p>3.04° TCH 40</p> <p>1.5 NM 3.4 NM 6 NM</p>		<p>2300</p> <p>106° 286°</p>		
CATEGORY	A	B	C	D
LNAV MDA	1100-1	417 (500-1)	1100-1½ 417 (500-1½)	NA
<input checked="" type="checkbox"/> CIRCLING	1220-1	537 (600-1)	1400-2 717 (800-2)	NA

EC-2, 11 JUL 2024 to 08 AUG 2024

EC-2, 11 JUL 2024 to 08 AUG 2024