

APP CRS **287°**  
 Rwy Idg **N/A**  
 TDZE **N/A**  
 Apt Elev **304**

**RNAV (GPS)-A**  
 P K AIRPARK (5W4)

**NA** DME/DME RNP-0.3 NA.  
 Procedure NA at night.  
 Use Fayetteville altimeter setting.

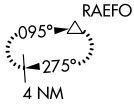
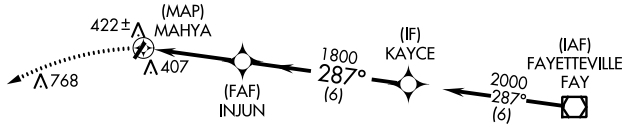
MISSED APPROACH: Climbing left turn to 3000  
 direct RAEFO and hold.

FAYETTEVILLE APP CON  
**127.8 290.25**

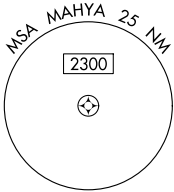
UNICOM  
**123.0 (CTAF)**

SE-2, 11 JUL 2024 to 08 AUG 2024

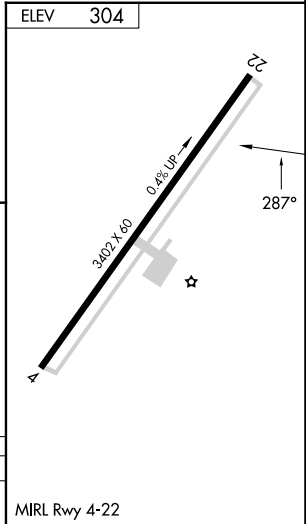
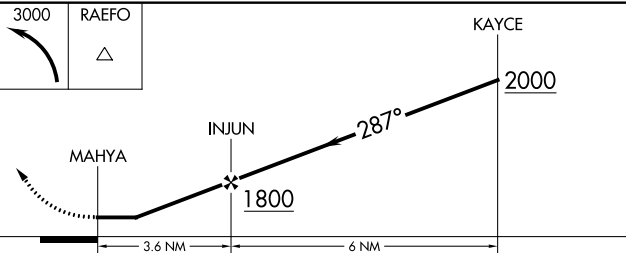
SE-2, 11 JUL 2024 to 08 AUG 2024



Procedure NA for arrival on FAY VOR/DME  
 airway radials 225 CW 009.



1249 A



CATEGORY	A	B	C	D
<b>CIRCLING</b>	840-1 536 (600-1)	860-1 556 (600-1)	920-1¾ 616 (700-1¾)	NA