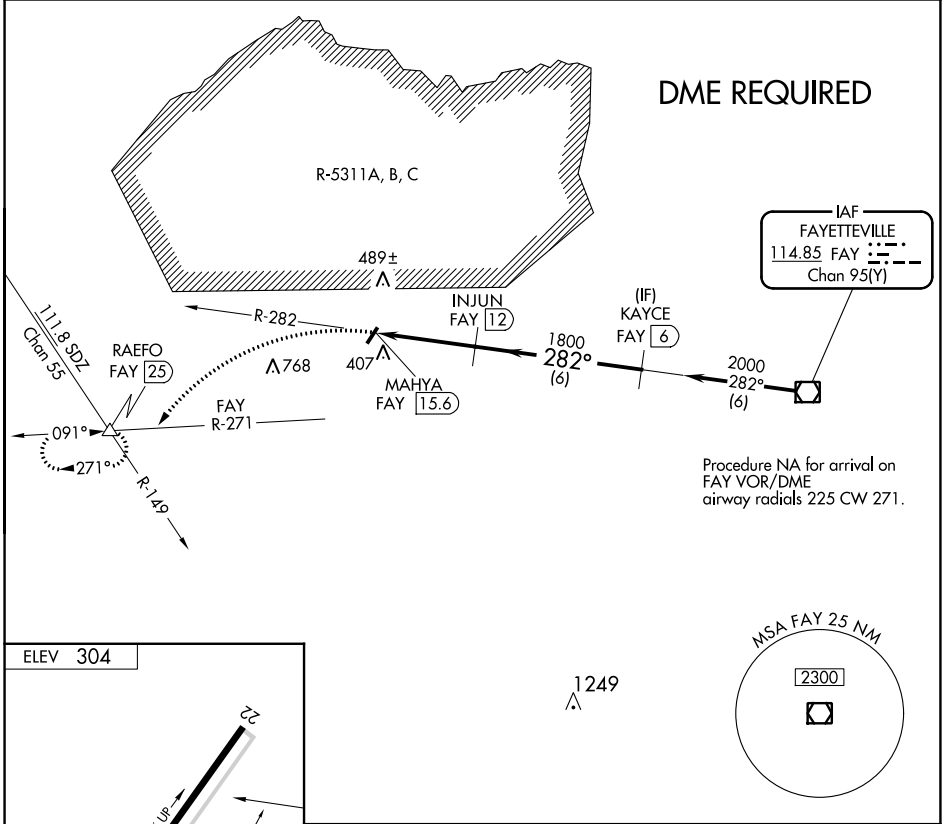


| | | |
|--|------------------------|---|
| VOR/DME FAY 114.85 Chan 95(Y) | APP CRS 282° | Rwy Idg TDZE Apt Elev N/A N/A 304 |
|--|------------------------|---|

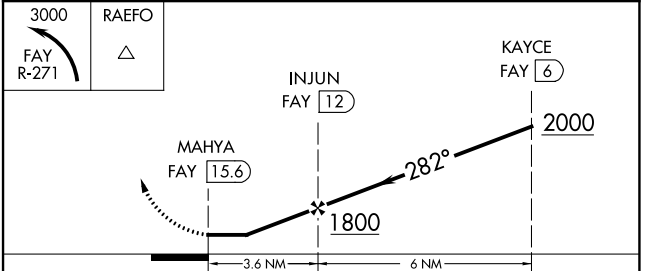
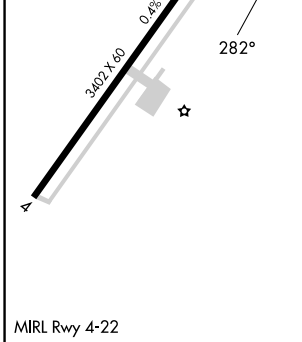
VOR-A
P K AIRPARK (5W4)

| | |
|--|---|
| NA DME required. Procedure NA at night. Use Fayetteville altimeter setting. | MISSED APPROACH: Climbing left turn to 3000 on FAY VOR/DME R-271 to RAEFO/FAY 25 DME and hold. |
| FAYETTEVILLE APP CON 127.8 290.25 | UNICOM 123.0 (CTAF) |



SE-2, 11 JUL 2024 to 08 AUG 2024

SE-2, 11 JUL 2024 to 08 AUG 2024



| CATEGORY | A | B | C | D |
|-----------------|----------------------|----------------------|---|----|
| CIRCLING | 840-1 536 (600-1) | 860-1 556 (600-1) | 920-1 ³ / ₄ 616 (700-1 ³ / ₄) | NA |