

# RNAV (GPS) RWY 16

SEMINOLE MUNI (SRE)

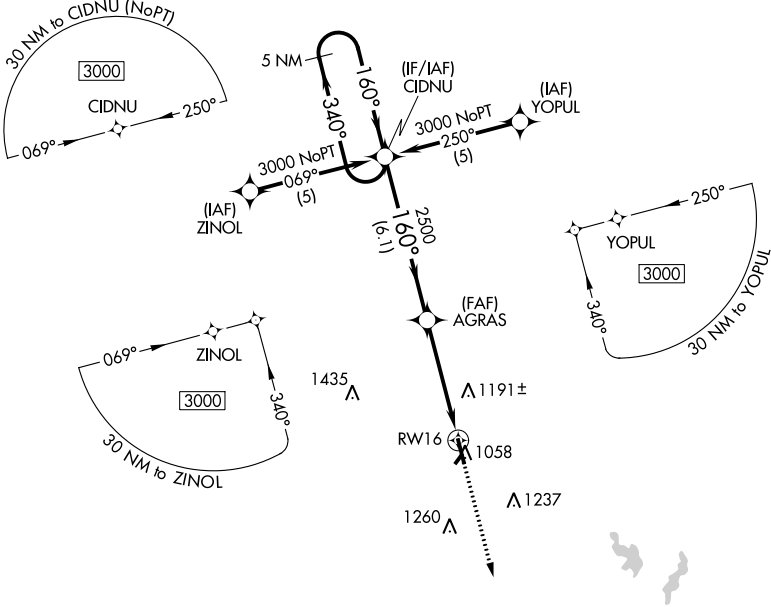
APP CRS	Rwy Idg	<b>5004</b>
<b>160°</b>	TDZE	<b>1023</b>
	Apt Elev	<b>1023</b>

RNP APCH:

Procedure NA at night. Circling NA to Rwy 5 and 23. Rwy 16 helicopter visibility reduction below 1 SM NA. When local altimeter setting not received, use Shawnee Rgnl altimeter setting and increase all MDAs 40 feet, and increase Circling Cat C visibility ¼ SM.

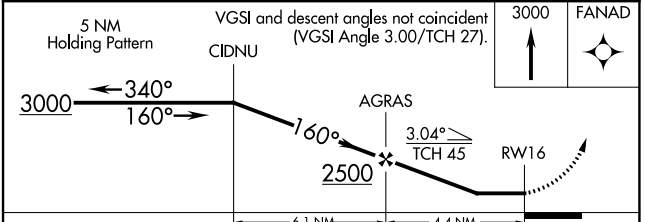
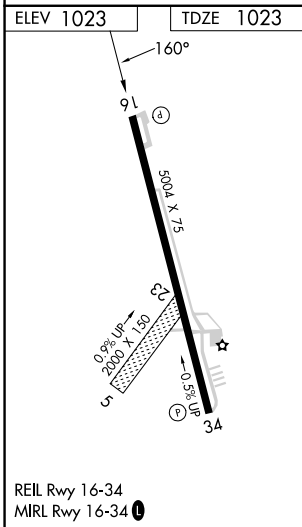
MISSED APPROACH: Climb to 3000 direct FANAD and hold.

AWOS-3 <b>118.625</b>	FORT WORTH CENTER <b>132.2 338.35</b>	UNICOM <b>122.80</b>
--------------------------	--	-------------------------



SC-1, 11 JUL 2024 to 08 AUG 2024

SC-1, 11 JUL 2024 to 08 AUG 2024



CATEGORY	A	B	C	D
LNAV MDA	1500-1	477 (500-1)	1500-1¼ 477 (500-1¼)	NA
CIRCLING	1500-1 477 (500-1)	1560-1 537 (600-1)	1620-1½ 597 (600-1½)	NA