

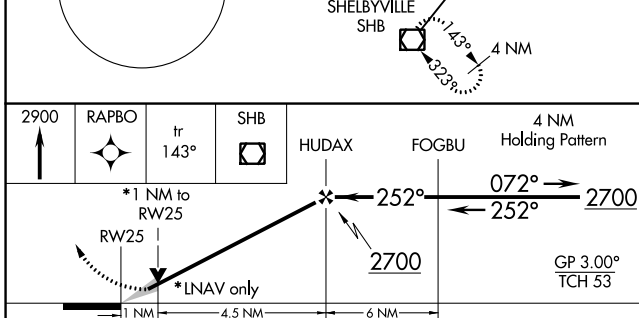
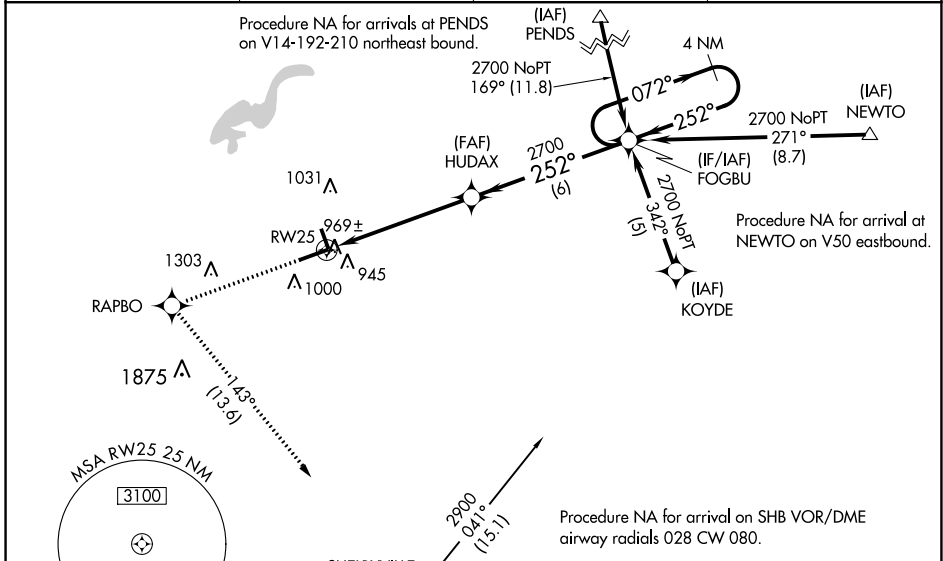
WAAS CH 56310 W25A	APP CRS 252°	Rwy Idg TDZE 860 Apt Elev 862	6005
--	------------------------	---	-------------

RNAV (GPS) RWY 25

INDIANAPOLIS RGNL (MQJ)

	For uncompensated Baro-VNAV systems, LNAV/VNAV NA below -16°C (4°F) or above 54°C (130°F). Baro-VNAV and VDP NA when using Indianapolis Intl altimeter setting. DME/DME RNP-0.3 NA. When local altimeter setting not received, use Indianapolis Intl altimeter setting and increase all DA 55 feet and all MDA 60 feet, and increase all visibilities 1/2 SM. When using Indianapolis altimeter setting inoperative table does not apply. For inoperative ALS, increase LPV all Cats visibility to 1 SM.	MALSR 	MISSED APPROACH: Climb to 2900 direct RAPBO and on track 143° to SHB VOR/DME and hold.
--	--	-----------	---

AWOS-3PT 124.175	INDIANAPOLIS APP CON 127.15 317.8	CLNC DEL 119.25	UNICOM 122.975 (CTAF)
----------------------------	---	---------------------------	---------------------------------



ELEV 862	TDZE 860
----------	----------

REIL Rwy 7 and 34
HIRL Rwy 7-25
MIRL Rwy 16-34

CATEGORY	A	B	C	D
LPV DA		1160-1/2	300 (300-1/2)	
LNAV/VNAV DA		1259-7/8	399 (400-7/8)	
LNAV MDA	1220-1/2 360 (400-1/2)		1220-5/8 360 (400-5/8)	
CIRCLING	1340-1 478 (500-1)		1360-1 498 (500-1 1/2)	1660-2 798 (800-2 1/2)

EC-2, 11 JUL 2024 to 08 AUG 2024

EC-2, 11 JUL 2024 to 08 AUG 2024