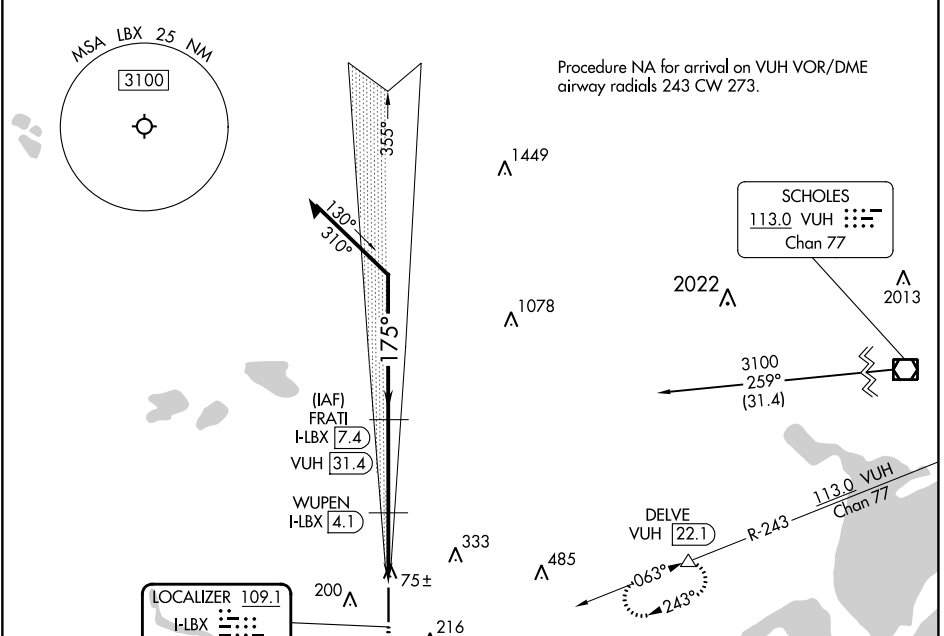


LOC/DME I-LBX <b>109.1</b> Chan <b>28</b>	APP CRS <b>175°</b>	Rwy Idg <b>7000</b> TDZE <b>25</b> Apt Elev <b>25</b>
---	------------------------	---

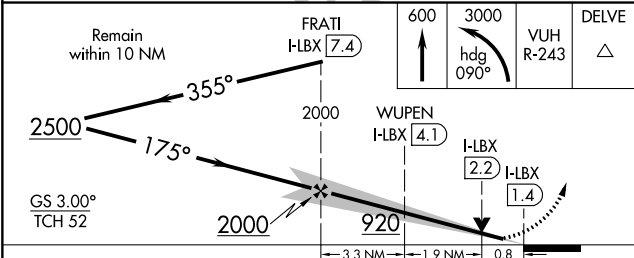
# ILS or LOC RWY 17

TEXAS GULF COAST RGNL (L.BX)

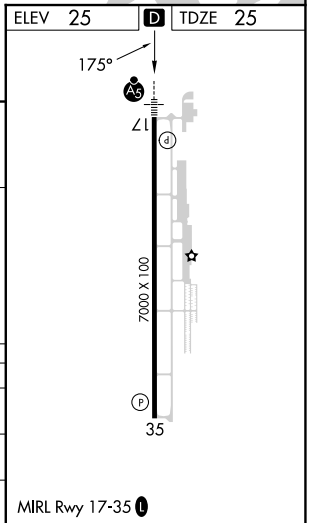
DME required.		MALSR	MISSED APPROACH: Climb to 600 then climbing left turn to 3000 on heading 090° and VUH VOR/DME R-243 to DELVE/VUH 22.1 DME and hold, continue climb-in-hold to 3000.
For inop ALS, increase S-LOC 17 Cat C/D visibility to ½ SM. Circling NA east of Rwy 17-35.			
ASOS <b>119.925</b>	HOUSTON APP CON <b>134.45 284.0</b>	CLNC DEL <b>125.2</b>	UNICOM <b>123.0 (CTAF) 0</b>



ELEV 25	<b>D</b>	TDZE 25
---------	----------	---------



CATEGORY	A	B	C	D
S-ILS 17		225-½	200 (200-½)	
S-LOC 17		340-½	315 (400-½)	
<b>C</b> CIRCLING	500-1	475 (500-1)	500-1½ 475 (500-1½)	620-2 595 (600-2)



SC-5, 11 JUL 2024 to 08 AUG 2024

SC-5, 11 JUL 2024 to 08 AUG 2024