

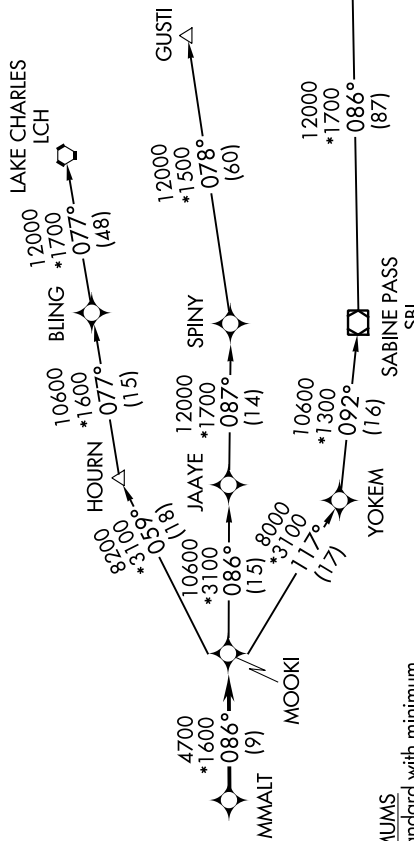
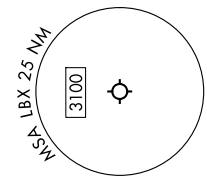
MMALT SEVEN DEPARTURE (RNAV)

ANGLETON/LAKE JACKSON, TEXAS

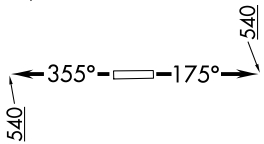
SC-5, 11 JUL 2024 to 08 AUG 2024

RNAV 1 - DME/DME/IRU or GPS.
RADAR required.

HOUSTON DEP CON
134.45 284.0
ASOS
119.925
CLNIC DEL
125.2
CTAF
123.0



TAKEOFF MINIMUMS
Rwys 17, 35: Standard with minimum
climb of 500'/NM to 540.



TOP ALTITUDE:
ASSIGNED BY ATC

NOTE: GUSTI and LCH Transitions ATC assigned only for aircraft departing
AXH, EFD, GLS, HPY, IWS, LBX, LVJ, SGR, TME, T00, T41 and 54T.

DEPARTURE ROUTE DESCRIPTION

TAKEOFF RUNWAY 17: Climb on heading 175° to 540, for RADAR vectors to MMALT, thence. . . .
TAKEOFF RUNWAY 35: Climb on heading 355° to 540, for RADAR vectors to MMALT, thence. . . .
... on track 086° to MOOKI, then on (transition). Maintain ATC assigned altitude.
Expect filed altitude 10 minutes after departure.

- GUSTI TRANSITION (MMALT7.GUSTI)
- LAKE CHARLES TRANSITION (MMALT7.LCH)
- WHITE LAKE TRANSITION (MMALT7.LLA)

NOTE: Chart not to scale.

MMALT SEVEN DEPARTURE (RNAV)

SC-5, 11 JUL 2024 to 08 AUG 2024